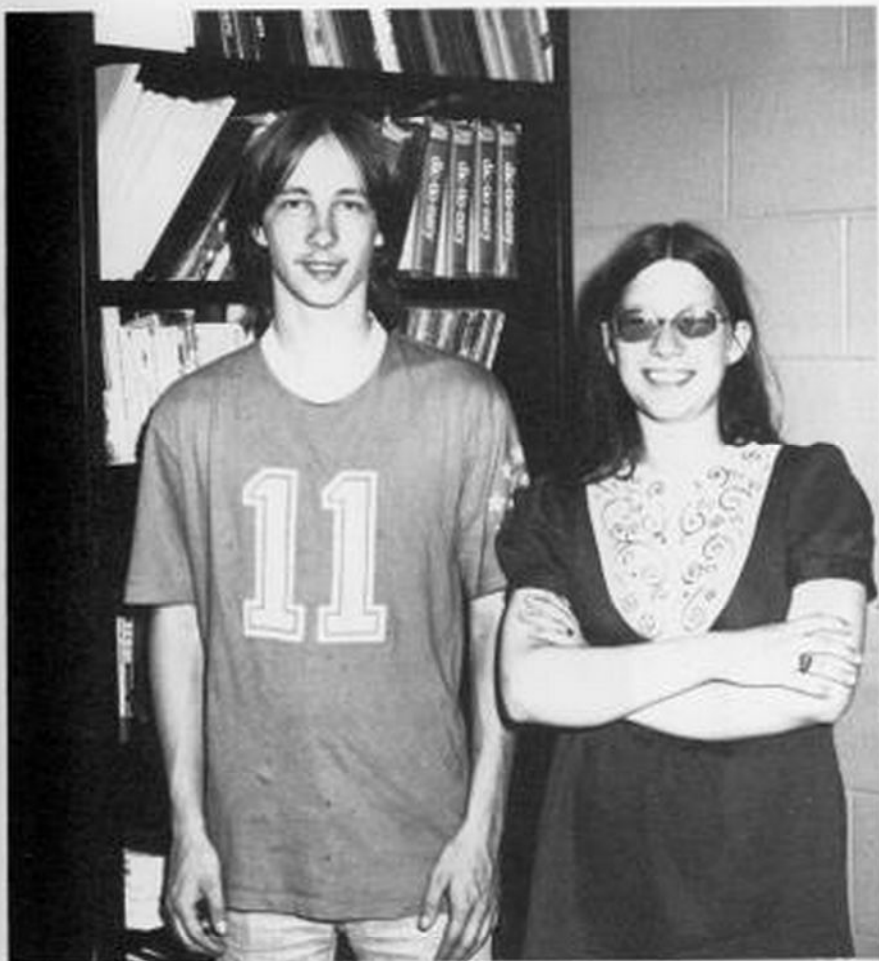


SPIRIT OF



1976 WARRIOR





LEFT: Sherry Moore and Robert McClure. Senior class editors.



Vicki Kerr. Homecoming editor.



LEFT- Diane Simmons, Graduation editor



ABOVE- Sandy Wooddell, Bicentennial editor, yearbook staff editor, feature editor, prom editor, and theme editor.



LOWER LEFT- Sean Hite: Cover and advertisement editor,
UPPER LEFT- John Dean: sports editor, UPPER RIGHT, Ran-
dall Lewis: Dedication and yearbook staff editor.



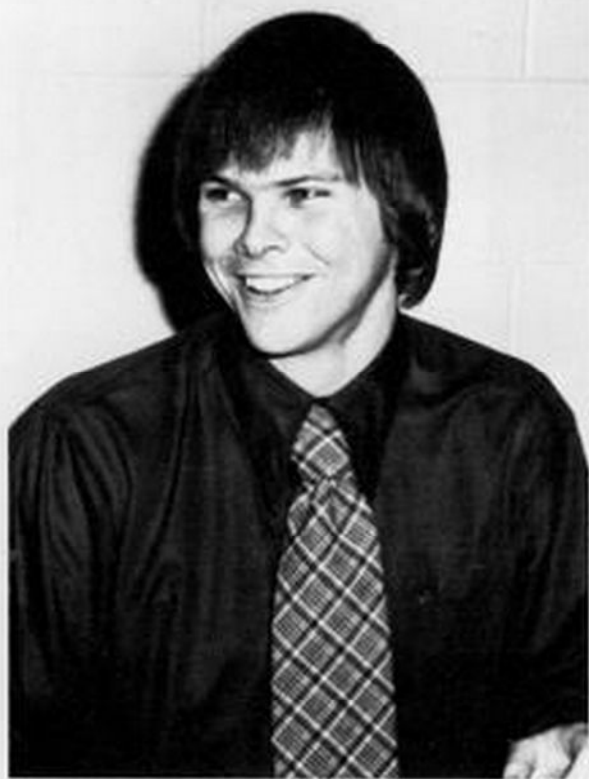
UPPER LEFT: Brenda Hamrick and Becky Kiner: Organizations editors. LOWER LEFT: Sherrie Taylor and Melinda Dean: Freshman editors.



ABOVE: Jerry McLaughlin and Jeanne Turley BELOW:
Mrs. Marty Wade, Advisor



FACULTY



Steven Barksdale
ATTENDED: North Carolina State University, West Liberty State College, Marshall University. DEGREE: A.B. in Secondary Education, M.A. in Social Studies. SPONSORS: Sophomore Class, England Exchange Program.

Ann Cuff
ATTENDED: University of Miami, Florida State, WVU. DEGREE: B.S. Ed. SPONSORS: Senior Class



Harold L. Crist
ATTENDED: WVU, Marshall University DEGREE: A.B., M.A.



Anna Lee Dean
ATTENDED: Marshall University DEGREE: A.B. SPONSORS: PALS Club, Sophomore Class.



Molly T. Diller
ATTENDED: Virginia Commonwealth University
DEGREE: A.S. English Education SPONSORS: Drama Club, Speech and Drama Class, Freshman Class, English Exchange Program.



Elmer Friel
ATTENDED: Potomac State College, New Mexico Highlands University, WVU. DEGREE: B.A. + 45 SPONSORS: Sophomore Class



Charles W. Fauber, Music Director
ATTENDED: West Virginia, Marshall University.
DEGREE: B.S. + 15 SPONSORS: Pops Group, Freshman Class, Director



Dick Groseclose
ATTENDED: Ohio State University **DEGREE:** B.S., M.A.
SPONSORS: Head Basketball Coach, Sophomore Class.



Lyla C. Howell, Guidance Counselor
ATTENDED: West Virginia University **DEGREE:** B.S. in Home Economics, M.A. + 15 in Counseling and Guidance.
SPONSORS: Introduction to Vocations, Freshman Class, Explorers.



Alice Irvine
ATTENDED: Potomac State College, WVU. **DEGREE:** B.S. + 15 **SPONSORS:** Senior Class, Director



Dolan Irvine
ATTENDED: Potomac State College, WVU **DEGREE:** B.S. in Agriculture **SPONSORS:** FFA, Junior Class



John Kinnison
ATTENDED: Marshall University, WVU and retired from
Navy SPONSORS: Electricity, Senior Class



Yvonne Lannan
ATTENDED: Davis and Elkins



Francis H. McElwee
ATTENDED: Hampdensyry, Marshall University, WVU,
Davis and Elkins DEGREE: A.B. SPONSORS: Freshman
Class



Kathy McGee
ATTENDED: California State College, California, Penn-
sylvania DEGREE: B.S. in Secondary Education,
Mathematics SPONSORS: Cheerleaders, Senior Class



Lee McMann
ATTENDED: Potomac State College, WVU DEGREE:
B.S., M.S. SPONSORS: FFA, Freshmen Class



Fay T. Moore
ATTENDED: Berea College, University of Kentucky,
Marshall University. DEGREE: M.A. in English SPON-
SORS: Sophomore Class



Kenneth Karl Nottingham
ATTENDED: Concord College DEGREE: B.S. SPON-
SORS: Junior Class



Donna Pennington
ATTENDED: West Virginia University DEGREE: B.S.
and Masters SPONSORS: Senior Class



Reta M. Rose
ATTENDED: West Virginia University DEGREE: M.A.
SPONSORS: Freshman Cheerleaders, Sophomore Class, Girl Athletics.



Virginia Shafer
ATTENDED: Glenville State College, WVU. DEGREE:
A.B. + 15 in English, Business, and History. SPONSORS:
PALS Club, Freshman Class



Janet Shank
SPONSORS: Senior Class



Pamela Sharpes
ATTENDED: West Virginia Tech. DEGREE: B.S. in
Biology and General Science. SPONSORS: Junior Class



Peggy Smith, Librarian
ATTENDED: Davis and Elkins, Marshall University,
Peabody College. DEGREE: A.B., M.A. (L.S.) SPON-
SORS: Freshmen Class, Library Science.



Linda Sue Stewart
ATTENDED: WVU, Marshall University. DEGREE:
+ 15 SPONSORS: Junior Class.



Quentin R. Stewart Jr.
ATTENDED: Glenville State College, Marshall University.
DEGREE: B.A. + 30 in Social Studies. SPONSORS:



Sam Taylor
ATTENDED: Glenville State College DEGREE: B



Raymond G. Tracy

ATTENDED: Morris Harvey, Ashland College, Glenville State College, WVU DEGREE: A.B., M.A. SPONSORS: Sophomore Class



Gladys A. Vance

ATTENDED: Davis Memorial Hospital. DEGREE: R.N. SPONSORS: Future Nurses Club, Medical Explorers Club, VICA.



Sharon O. Vance

ATTENDED: Glenville State College, WVU DEGREE: A.B. in Education. SPONSORS: Future Homemakers of America, National Honor Society, Junior Class.



Berlin VanDevender

DEGREE: Electronic Technician 1st class, an equivalent of a two year college degree



Linda VanReenan
ATTENDED: West Virginia Wesleyan College DEGREE: B.S. in Home Economics SPONSORS: Future Homemakers of America, Junior Class



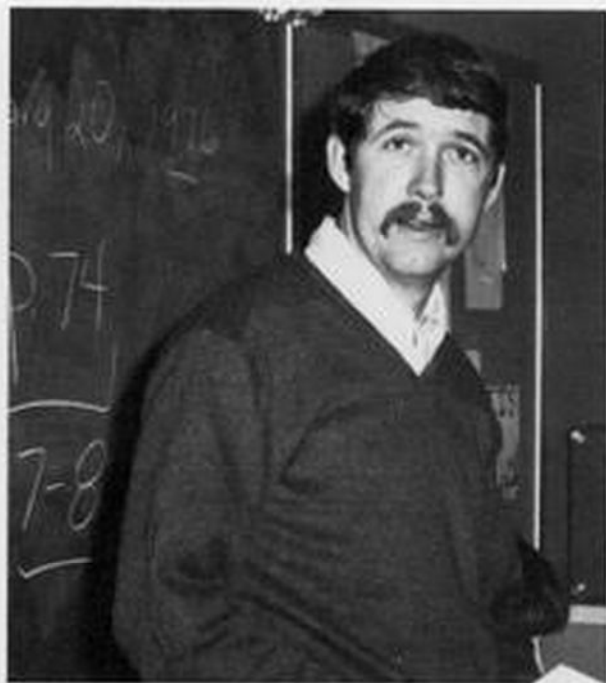
Mirian VanNostram
ATTENDED: Marshall University DEGREE: A.B. in Art, Minor in English SPONSORS: Freshman Class



Glen Wade
ATTENDED: Marshall University DEGREE: B.A. in Special Education and Elementary Education SPONSORS: Future Nurses Club, Future Teachers Club, Senior Class



Marty T. Wade
ATTENDED: Concord College, West Virginia University DEGREE: B.S. in Education Language Arts Comprehensive, M. A. in Reading, Reading Specialist SPONSORS: Senior Class, Newspaper, Yearbook, Future Teachers



Lawrence T. Workman

ATTENDED: Glenville State College, University of Maryland, West Virginia University DEGREE: A.B. in Business Education and Physical Education SPONSORS: Senior Class, Assistant Coach



Arch C. Wooddell

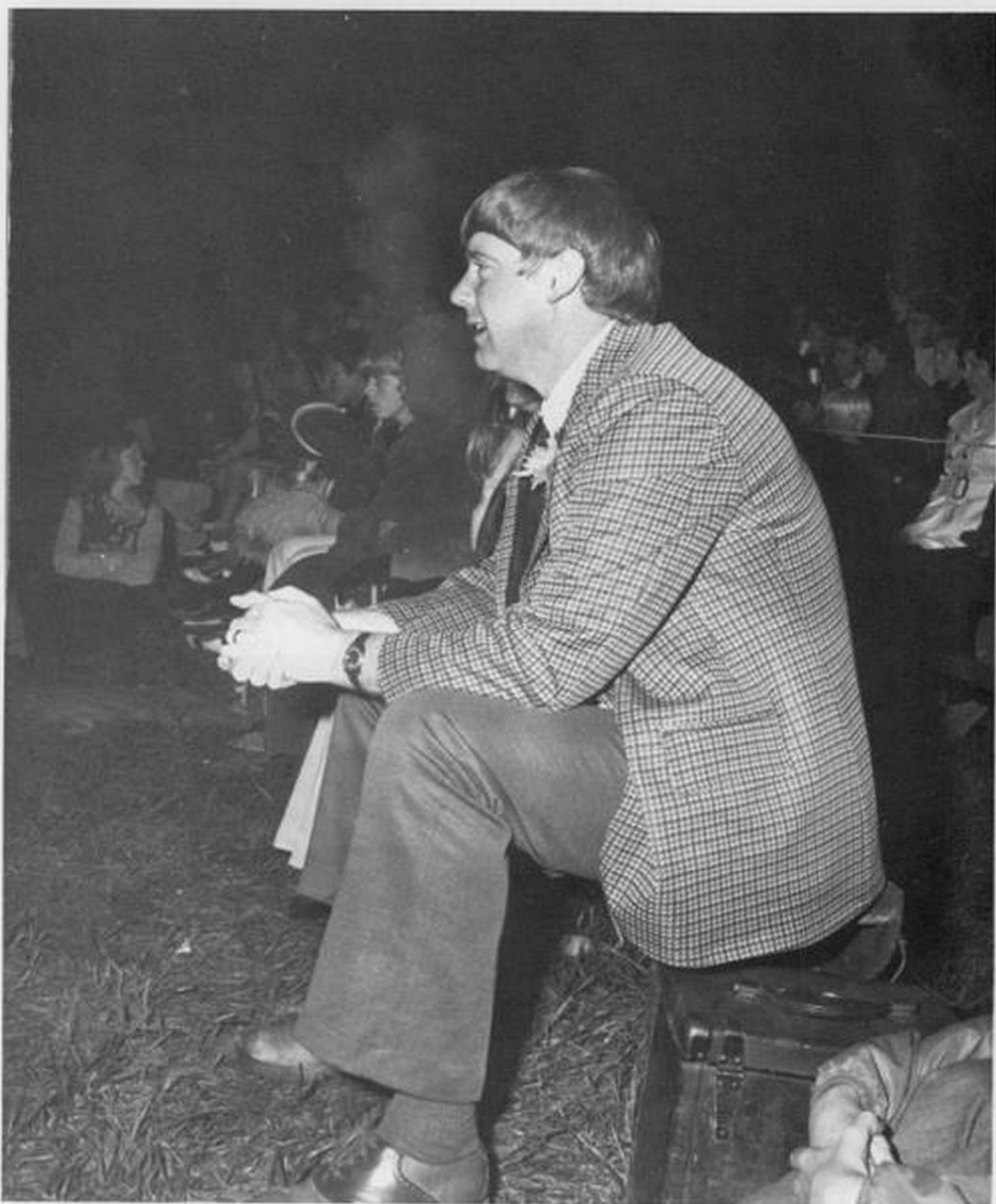
ATTENDED: West Virginia University DEGREE: B.S. + 15 SPONSORS: Head Track Coach, Assistant Football Coach, Letterman's Club, Sophomore Class



Kermit Wyatt

ATTENDED: Concord College 1 year SPONSORS: Senior Class

ADMINISTRATION



Kenneth E. Vance, Principal

ATTENDED: Potomac State College, Glenville State College, WVU DEGREE: A.B. in Education, M.A. in Guidance and Counseling.

OFFICE STAFF



Nancy Rose
Secretary



"Gwennie" Friel
Secretary



Dave Smith
Vocational Director
ATTENDED: WVU, Marshall University, Penn State,
Shepherds State Teachers College DEGREE: B.S., M.S.



Cora Lee Wyatt
Accountant



Robert Seaman, Assistant Principal, Athletic Director
ATTENDED: West Virginia Tech, Kent State University
DEGREE: B.S., Masters Education

Larry Brannan, Guidance Counselor
ATTENDED: University of Dayton DEGREE: B.S. in
Education (History and Government), M.S. in Education
(Guidance and Counseling)

Joe Jones
Custodian



COOKS



David Shebley, Cafeteria Manager
ATTENDED: University of Maryland DEGREE: B.S.
Landscape Design

Nina C. Brooks

Mae Gay Corbett

Nancy Kirk

Kathryn Simmons

Sharon Turner









Curriculum

VOCATIONAL CLASSES



Boys Home Economics is being taught at P.C.H.S. for the first time. They learn how to prepare foods, sew, and other things that they need to know when they leave school. Commercial Foods, Commercial Sewing, and Home Economics I and II are taught also. Girls take these classes but in the years to come maybe some boys will take them also.





Typing is a very popular subject at P.C.H.S. Students of all grades may take this class. Secretarial Block, Clerical Block, and Bookkeeping, are also taught for students who are interested in later secretarial jobs.



Electricity and Electronics are each three hour block classes. Electricity helps the student to wire a complete house under the National Electric Code when they finish the class. In electronics the boys repair radios, televisions, clocks, and small motors so that they may be able to fix things around their own home some day instead of having to depend on someone else and the class is also for a job in their future.



Building and Maintenance is a three hour block class. The boys make different articles from doghouses to houses for people. This is the second year building and maintenance has been taught at this school and seems to be a favorite of many boys.



Another vocational class at P.C.H.S. is agricultural science. This class studies the plants and animals. It is made up of boys and girls who are interested in farming or animals. They also make equipment for farming such as hay wagons and feeding boxes.

Welding is a very worthwhile class to be involved in. The boys can earn a welding certification certificate then when they are ready to leave school they can get a good paying job.



ACADEMIC



Biology, the study of plant and animal life, is a required subject for sophomores. Students do different experiments with the plants and animals.

Chemistry, Physics, and Physical Science are also science classes which are taught at P.C.H.S. College bound students are required to take at least two different types of science classes and should try to take more if they can.



Physical Education is a requirement of all freshmen but other students take the subject so they can stay in good shape and for the enjoyment. The boys and girls have many different activities which they participate including volleyball, soccer, basketball, football, hockey, softball, wrestling, archery, bowling, using the weight machines, and using the gymnastic equipment.





Seniors



TOM ARBOGAST



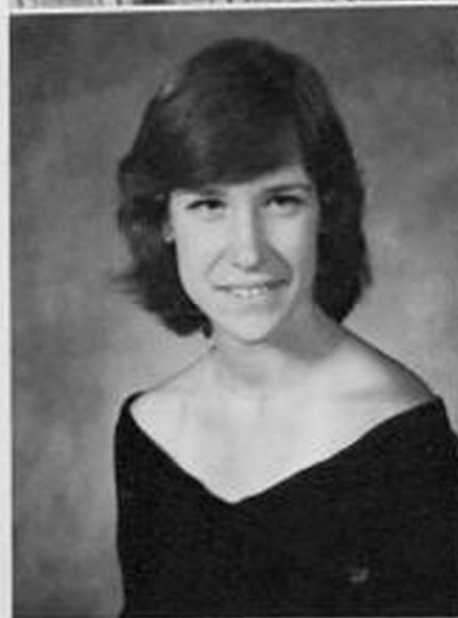
BONNIE AULDRIDGE



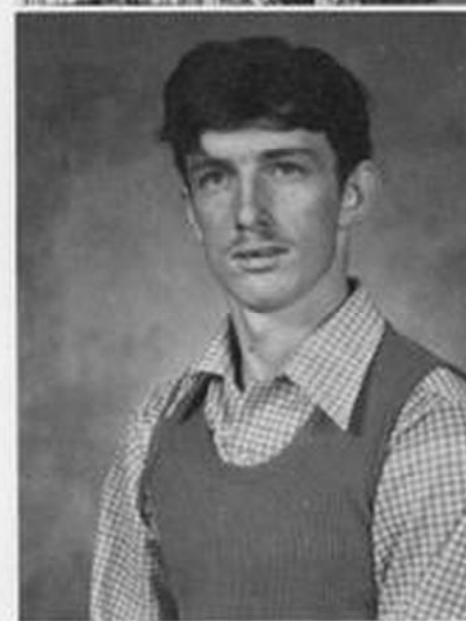
PRICE BARLOW



FRANK BARRETT



ALLISON BECKER



JEFF BENNETT



SANDY BEVERAGE
F.H.A. 1,2,3; Easter Ball Com-
mittee 2; P.A.L.S. 2,3; Prom Com-
mittee 3; Drama Club 3; Big
Brother- Big Sister Program 3.



LORIETTA BLANKENSHIP



ADAM BOND



TOM BOOTHE



CLAUDE BROWN



DIANE BUCHANAN



KATHY BURKS
J.V. Cheerleader 9; Choir 9; Pep
Club 9; Prom Committee 11;
Varsity Basketball 11,12; Track
11,12.



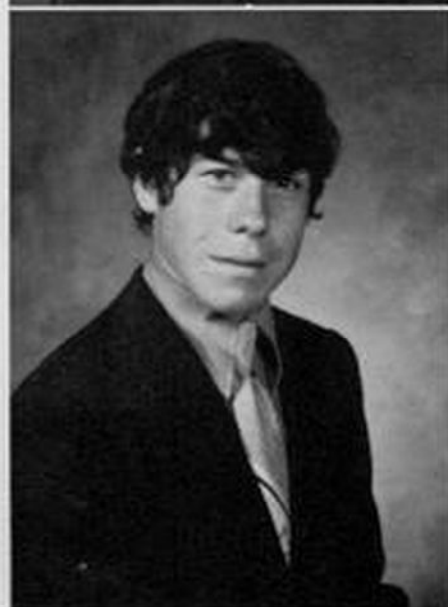
DENISE CAIN



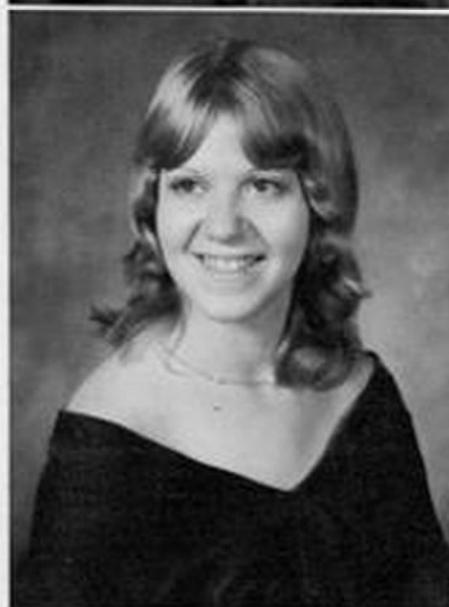
SHERRY CALHOUN



EUGENE CARPENTER



BRUCE CARR
Football 1.



KAREN CAULEY



VIRGINIA CLOONAN

Pep Club 1; Class Secretary 1;
Homecoming Attendant 1,2,3;
Homecoming Queen 4; Know Your
State Government Day 3; Miss
Warrior Attendant 3; Prom
Decorating Committee 3; Office 4;
F.B.L.A. Club 4, Secretary 4.

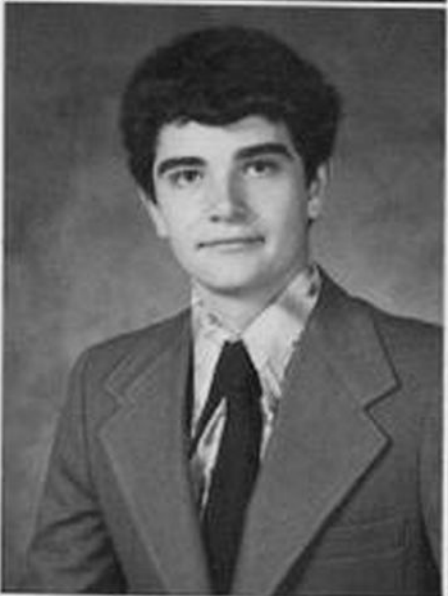


DOUG COLAW



ANITA CRIST

Band 1,2; Officer 2; Dance Band 2;
F.H.A. 1,2,3,4, Secretary 2,3, Presi-
dent 4; Pep Club 1,2,3,4, Vice-
President 4; Student Council 2,3,4,
Vice-President 4; National Honor
Society 3,4; Class officer 1,3; Atten-
dant to Miss Warrior 1,4; Office 4;
Graduation Usherette 2,3; Easter
and Christmas Ball Decorating
Committee 2; Homecoming & Prom
Committee 3; Group Discussion
Participant 4; Senior Picture Com-
mittee 3; Soil Conservation Speech
Contestant 1.



GREG CURRY

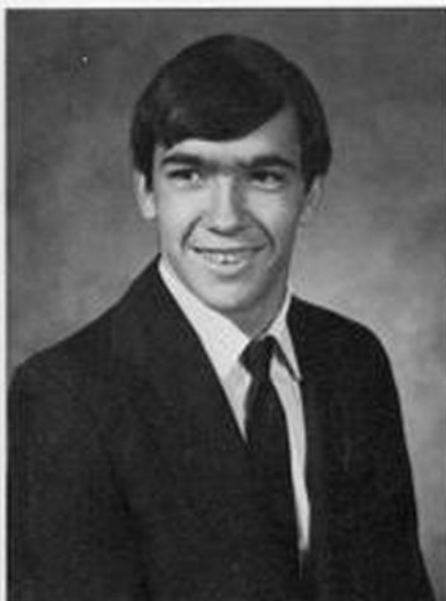
Junior Fireman Club 1; Class
Secretary 10; National Honor
Society 11,12; Conservation Club
12; Prom Committee 11.



JIMMIE CUTLIP



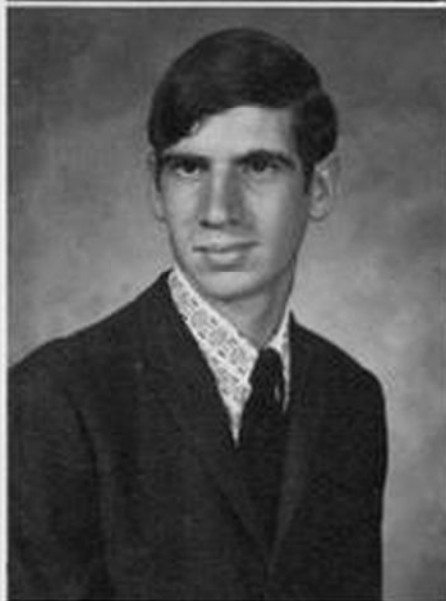
MIKE DUNBRACK



JOHN EVANS



KITTY GALFORD



LEE GOOD



DEBBIE GRIMES
F.H.A. 1,2,3,4; Christmas Choir 1,4;
Drama Club 2,3; Bible Club 3,4;
Band 2,3,4; Medical Explorers 4;
Who's Who 4.



EMERY GRIMES



ERMA GRIMES



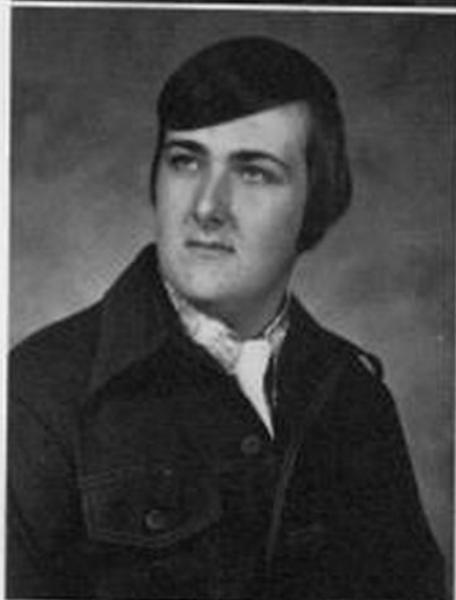
BECKY GRIMES
Band 1,2,3,4; Nurses Aide 2,3; Pep
Club 1.



ALFRED GUM



DONALD GUM
Football 1,2,3,4; Basketball 1,2,3,4;
Track 1,2,3,4; Pops Group 4; Band
1,2,3,4; National Honor Society 3,4;
Letterman's Club 3,4; Student
Council 1; Graduation Usher 3;
Prom Committee 3; Debate Club 3.



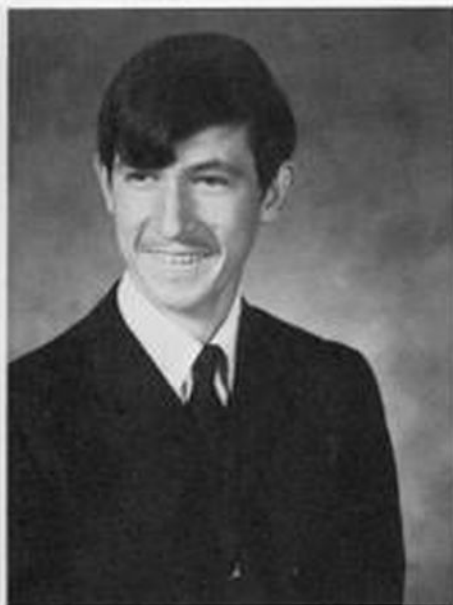
RICK HARPER



DANNY HATTON



STEPHEN HEFNER



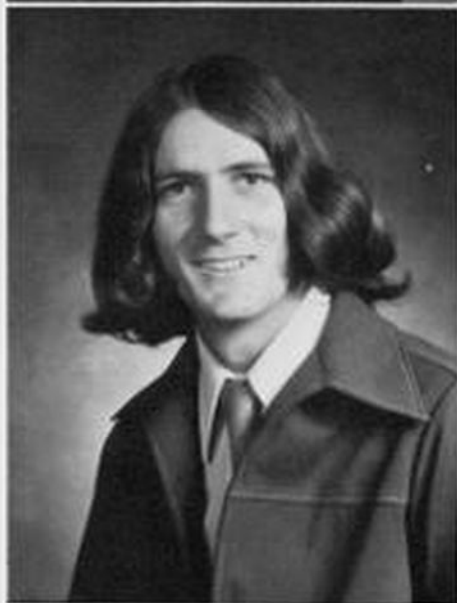
DICK HICKMAN



WILLIAM HILL



LARRY HOLSON



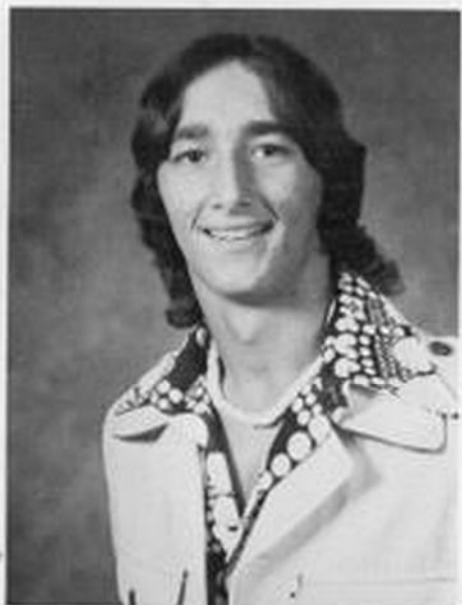
MARSHALL HOOVER



JEANIE IRVINE



ANETTA JOHNSTON
Basketball 3,4; Track 3,4; F.H.A.
1,2,3,4; F.B.L.A. Club 4; Secretary;
Student Council 4; Runner-up to
Snowflake Queen 4.



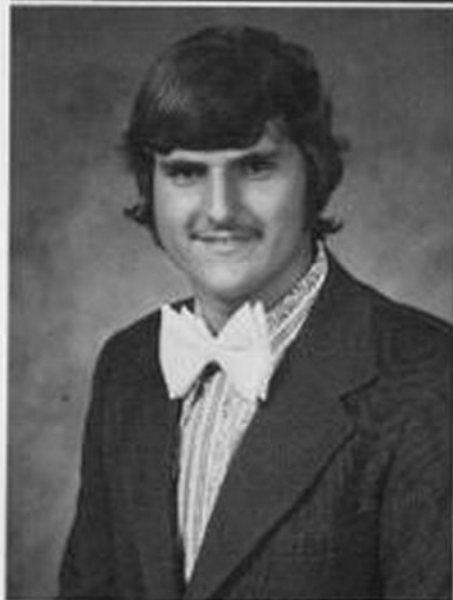
DAVID JONESE
Football 1,2,3,4; Basketball 3,3,4;



KAREN KELLISON
Band 1,2,3,4; Banner girl 1,2; Ma-
jorette 3,4; Pep Club 1,2,3; Dance
Band 1; Teacher's Aide 4; Prom
Committee 3.



SUSAN KERSHNER
Pep Club 2,3,4; Conservation Ex-
plorers Club 4; Varsity Basketball
3,4; Track 3,4; Office 4.



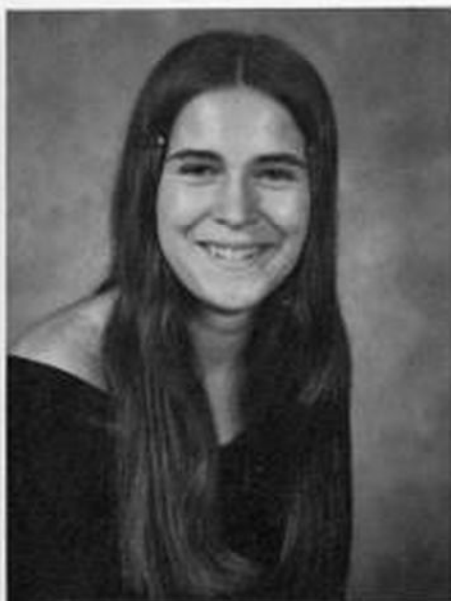
PAUL KESLER



SALLY LAMBERT
Pep Club; F.H.A. 1,2,3,4; C.B. Club
4; F.F.A. 1; Who's Who 1.



DALE LONG



GERALDINE MACE



CATHY MARTIN



FAYE MATHENY



ROBERT McCLURE
Band 1,2; Newspaper Staff 4; Year-
book Staff 4; Pep Club 1; Drama
Club 4; Chess Club 2; F.F.A. 1.



STEVE McCOY
Football 1,2,3,4; Basketball 1;
Letterman's Club 1,2,3,4; F.F.A. 1.



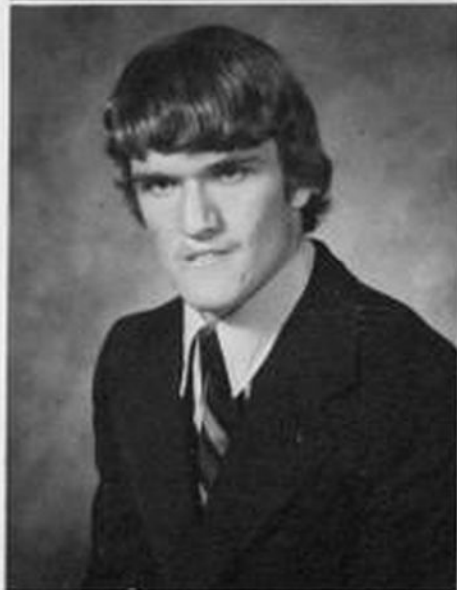
CAROLYN McLAUGHLIN
Teacher's Aide 4.



MIKE McLAUGHLIN
Football 1,2,3,4; Basketball 2; Prom
Committee 3; Conservation Ex-
plorers Club 3,4, President 4.



PAT McLAUGHLIN
Football 1; Basketball 1,2,3,4;
Track 3,4.



JOE McMILLION



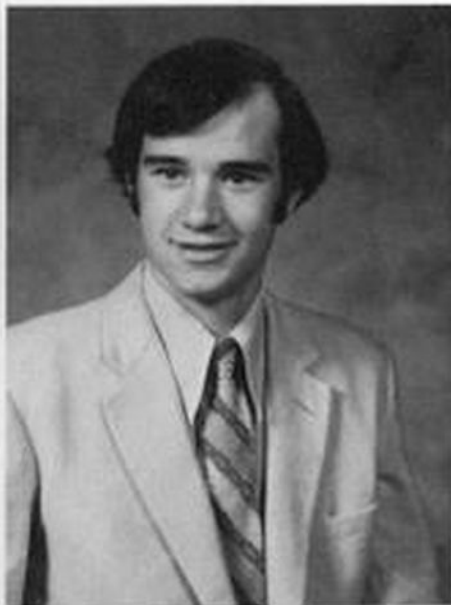
RANDY McPETERS



JAN MILLICAN



FORREST MULLENAX



CHRIS MULLENS



RANDALL NOTTINGHAM
F.F.A. 1; Football 1; Track 2,3,4;
National Honor Society 3,4; Vice-
President 4; Chess Club 2,3,4.



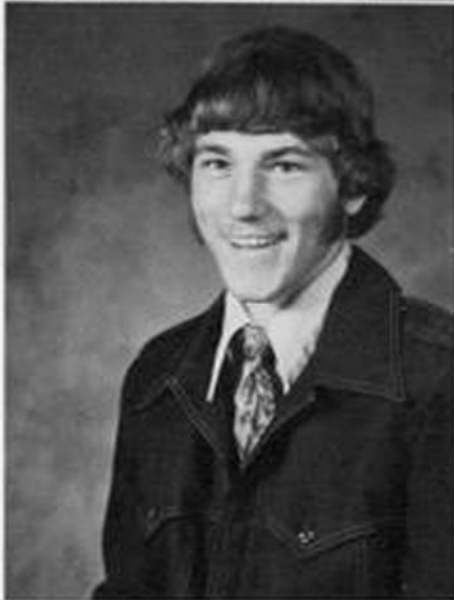
LARRY OFFUTT
Chess Club 1,2,3,4; F.F.A. 1,2,3,4;
Football 1; National Honor Society
3,4; F.F.A. Treasurer 3.



MARY JANE OREF
Cheerleader 1,2,3,4; Mascot 4; Band
1,2; Student Council 1,2,3,4; Vice-
President 3; President 4; Mt.
Heritage 1; Trixies 3,4; Easter Ball
Committee 2; Homecoming Dance
Committee 3; Prom Committee 3;
Track 3,4; Pep Club 1,2,3,4; Second
Runner-up for Homecoming Queen
4; Office 3,4; Graduation Usherette
3; National Honor Society 3,4.



PAULA PHILLIPS THOMAS
Cheerleader 1,2,3,4, (head) 2; Pep
Club 1,2,3,4; Prom Committee 3;
Homecoming Decorating Com-
mittee 3; United Nations Pilgrimage
for Youth, 2nd. place 3; Homecom-
ing Queen Candidate, 1st. runner-up
4.



JOHNNY PUFFENBARGER
Football 1,2,3,4; Letterman's Club
2,3,4.



KATHY RICHMOND
Band 1,2,3; Bible Club 1; England
Exchange Program 2; Medical Ex-
plorers 4.



JANET ROSECRANCE
Band 1,2,3,4; F.H.A. 1,2; Easter
Ball Committee 2; Prom Decorating
Committee 3; Homecoming Dance
Committee 3; Girl's Track 3; Pop's
Group 4.



TERESA RUDD KEATLEY
Pep Club 1,2; Conservation Club
1,2; Nurse's Club 2; Girl's Track 3;
F.H.A. 1,2; Teacher's Aide 3,4.



JIMMY RYDER



MILDRED RYDER



DEBBIE SCOTT



KAREN SCOTT
Pep Club 2,3,4; Teacher's Aide 3;
Office 4.



GEORGE SEWELL



DEBBIE SHARP
FFA 1,2,3; FFA Secretary 2; FHA
1; Bible Club 2.



EARL SHARP



LEONA SHARP



JEFF SHAW
Football 2,3,4; Track 2,3; Letter-
man's Club 3,4; Teacher's Aide 3.



ANNETTE SHIFFLET
Band 1,2; Alternate Cheerleader 1;
Pep Club 1; Conservation Club 3;
Prom Committee 3; P.A.L.S. 3,4;
Who's Who 3; Picture Committee 3.



DIANA SIMMONS
Basketball 3.



LINDA SHUE



CHRISTINE TAYLOR
F.H.A. 1,2,3,4; Prom Committee 3.



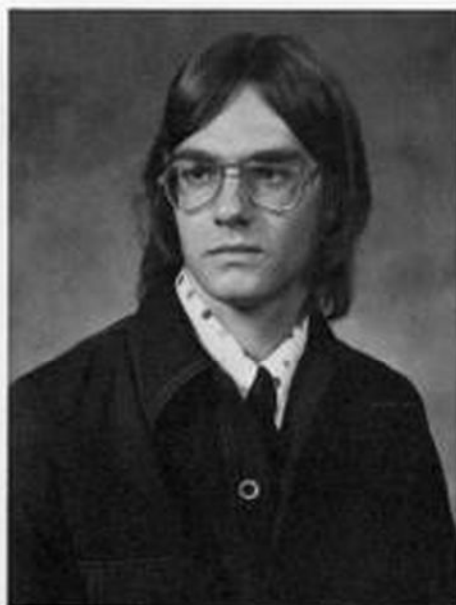
GARY TAYLOR
Band 1,2,3,4; Know Your State
Government Representative 3;
Chess Club 3; National Honor
Society 4; Prom Committee 3; Math
Club 4; Class Treasurer 3.



MARY TAYLOR
Flora Club 1; P.A.L.S. 3,4;
Teacher's Aide 4; Vice President of
P.A.L.S. 4.



RACHEL TAYLOR
Band 1,2; Chorus 1; F.H.A. 2,3,4;
Conservation /Club 2; Pep Club
1,2,4; Homecoming Decorating
Committee 3; Prom Committee 3;
Future Teachers 4; Big Sisters
Program 4; Teacher's Aide 4.



BRAD THOMAS



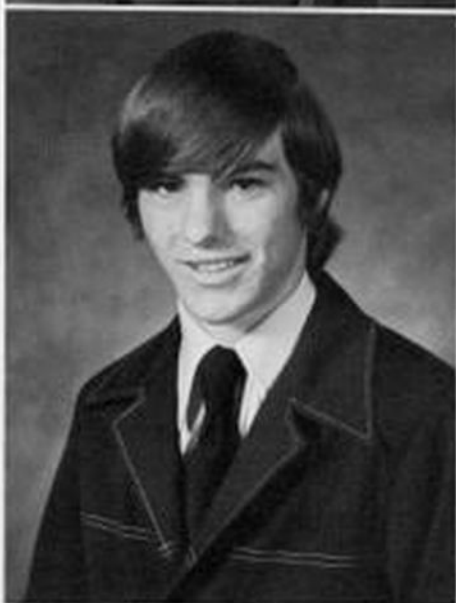
GEORGE THOMAS



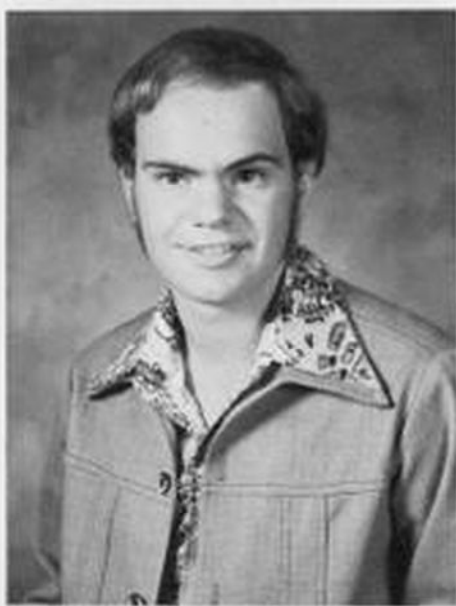
KENNY THOMPSON



PRISCELLA TINCHER
Band 2; Bible Club 1; Future
Nurses of America 2,3.



JOHNNY TOTTON



MICHAEL TOTTEN



SANDY TRIPLETT



MARY VANDEVENDER



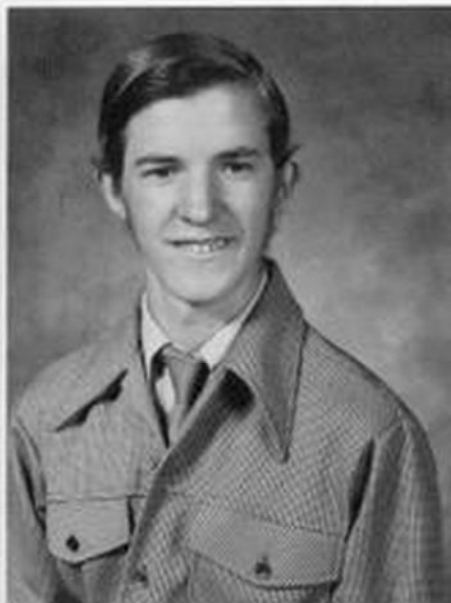
TERRY VANREENEN
Student Council 1; Band 1; Future
Nurses Club 3; Homecoming Com-
mittee 3; Prom Committee 3;
Teacher's Aide 3,4; Newspaper Staff
3; Yearbook Staff 3; P.A.L.S. Club
2,3,4, President 4; Picture Com-
mittee 3.



DEBBIE VARELA



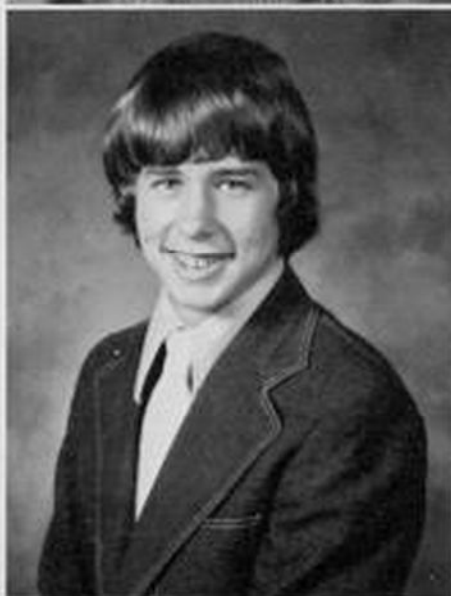
ALBERTA VARNER



HARRISON VARNER



JOHN WALKER



JEFF WEIFORD
Homecoming Queen Escort 4; Mr.
and Miss Warrior Escort 3; F.F.A.
1; Golf 1,3; Teacher's Aide 4.



CHARLES WILFONG
F.F.A. 1,2,3,4; President 4; Star
State Farmer of WV 4; State
Livestock Proficiency Award 4;
Class Secretary 4; National Honor
Society 3,4; Nature Club 2; Chess
Club 3,4; Graduation Usher 3; Stu-
dent Council 1,4; Teacher's Aide
3,4.



JANETTA WILLIAMS
Band 1,2,3,4; Majorette 3,4; Assis-
tant Head 4; Easter Ball 2; Prom
Committee 3; National Honor
Society 3,4; Graduation usherette 3;
English Exchange Student 3; All
Area Band 2,3,4; Junior Miss
Contestant 4; Medical Explorers 4.



ALAN WRIGHT
Vo-Ag 1,2; Ag Mechanics 2;
Building Maintenance 3,4; Conser-
vation Club 1; Junior Firemans
Club 1,2.



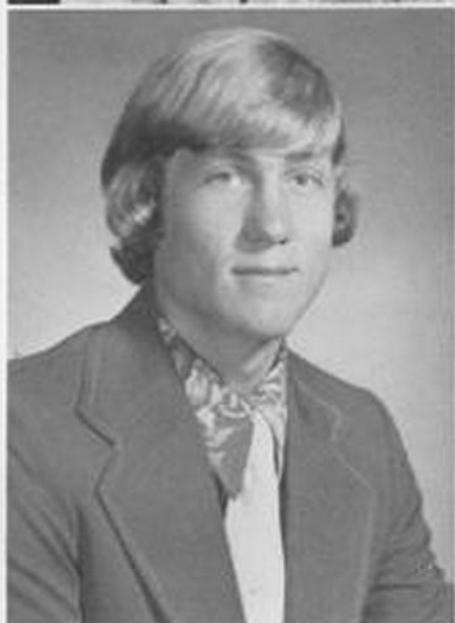
SHERRY WYATT MOORE
Cheerleader 1, Alternate 3; Pep Club 1,2,3; F.H.A. 1,2,3,4, Vice-president of State and National Projects 4, Vice-president of Public Relations 3; Class Treasurer 2; Class Vice-president 3; National Honor Society 3,4; Jr-Sr Prom Committee 3; Homecoming Dance Committee 3; Easter Ball Committee 2; Usherette for graduation 3; Mt. Heritage Club 1,2; P.A.L.S. 2,3,4, Secretary 4; Big Brother-Big Sister Program 3; Future Nurses Club 1; Attendant for Homecoming 4; Assistant Editor of "Smoke Signal" 3; Yearbook Staff and Newspaper Staff 3,4; Editor of Sophomore Section of "Warrior" 3; Editor of Senior Section, Curriculum, and Advertising of "Warrior" 4; England Exchange Student 2; Picture Committee 3.

EMMA YOUNG



DEBBIE BENNETT

KRIS KUHLKEN
Drama 2,3,4; Track 2,3,4; Band 1,2,3,4; Chess Club 2; Class Treasurer 4; National Honor Society 3,4; Jazz Band 2,3,4; Choir 2,3,4.



GEORGIA McNEIL





CLASS OFFICERS AND SPONSORS



Left to right: Mrs. Wade; Mr. Wade; Mrs. McGee; Mr. Workman; Jim Ryder, president; Mrs. Irvine; Kris Kuhlken, treasurer; Charles Wilfong, secretary; Randall Nottingham, vice-president; Mr. Taylor.

SENIOR SUPERLATIVES



Most Studious
Gary Taylor - Jeanie Irvine



Biggest Pranksters
Joe McMillion - Rachael Taylor



Best Personality
David Joese - Terry VanReenen



Most Intellectual
D. C. Gum - Cathy Martin



Class Clowns
Billy Sharp - Becky Grimes



Sexiest
Marshall Hoover - Karen Couley



Cutest Couple
Paula Thomas - Brad Thomas



Biggest Brownies
Sherry Moore - Charles Wilfong



Biggest Masterminds
Larry Offutt - Debbie Scott

Most Organized
Jeff Weiford - Alison Becker



Most Talented
Kris Kuhiken - Janetta Williams





Most School Spirited
Mary Jane Oref - Jeff Shaw



Neatest
Jan Milligan - Steve McCoy



Most Daring Couple
Steve McCarty - Faye Matheny



Happy Go Lucky
Tom Arbogast - Marilyn Gum

Most Energetic
Paul Kesler - Kathy Burks



Most Popular
Jim Ryder - Virginia Cloonan





Most Dependable
Randall Nottingham - Debbie Grimes



Most Bashful
Alfred Gum - Mildred Ryder



Most Athletic
Jim Cutlip - Ann Johnston



Most Courteous
Greg Curry - Annette Shifflett



NOT AVAILABLE FOR PICTURES

Most Likely To Succeed
Anita Crist - Tom Boothe

Biggest Pest
Price Barlow - Susan Kershner



Imagine, if you will, a town made up entirely of the 1976 graduating class of Pocahontas County High School. The name of our town is Yew Nork, a progressing small town, striving to meet the needs of its citizens. So, with all this in mind lets take a trip through our town and see what people are up to. First, a stop at Town Hall, where we are greeted at the door by Larry Holson, the doorman. Once inside we pass the recorders office, occupied by Bill Hill and his hard working secretary, Becky Grimes. Continuing down the corridor, we are advised by the janitor, Steve Hefner, to walk softly over his recently polished floor, and Sheriff Danny Hatton tells us where the speed traps are today. Yew Norks accountant, Marilyn Gum says that Mayor Dick Hickman is in a tizzy today over the towns financial situation. The town council, consisting of Rick Harper, (Chairman), Butch Gum, Erna Grimes, Kitty Galford, Mike Dunbrack, and Greg Curry are in session, planning who knows what for what occasion.

Leaving the courthouse we are taken by Tom Boothe's Taxi Service to tour the streets of Yew Nork. First, we come to the car wash, owned and operated by Kathy Burks, Karen Cauley, and Anita Crist. Next, to the Yew Nork National Bank, owned by Diane Buchanon, with her tellers and most trusted friends, Sandy Triplett, Marshall Hoover, and Virginia Cloonan. After leaving the bank we travel two doors down the street to the gymnasium, where a host of characters can be found doing just about anything. Such as: Tom Arbogast, Adam Bond and John Evans working out on the bench press, with Debra Grimes waiting in line. Jimmie Cutlip, who is coaching instructor here is showing David Jonese and Jim Ryder how to execute a perfect lay up. Working out on the trampoline is Geraldine Mace and Cathy Martin.

Now, down a back street to one of the towns taverns, this one operated by Faye Matheny and Steve McCarty with their bouncer Price Barlow, and their barmaids Allison Becker and Ann Johnson. Among local customers, we see Debby Scott, Karen Kellison and Mary Jane Oref.

Next door is the Barber Shop, with its two owners, Forrest Mullenax and Randy McPaters. Now, on to our discount gas station owned by Pat McLaughlin, and operated by Bruce Carr, Sugar Cain and Frank Barrett as mechanics. After a quick stop at the Yew Nork Diners Club, owned by Emery Grimes, we continue on to the dentist office where we find Debby Bennett, Eugene Carpenter, Doug Colaw and Bonnie Aldridge, all just aching to see Dr. D. C. Gum. Over the dentist office where we find the Yew Nork Free Library, where Kathy Richmond, librarian, is trying to stifle a disturbance with Steve McCoy and Paul Kessler, and doing a good job of it too.

A stylized black silhouette of a town skyline is positioned at the top of the page. On the left, there is a rectangular building with a small square window. To its right, a tall, thin chimney rises, emitting a thick, dark plume of smoke that curves over the top of the page. The smoke plume is composed of several thick, horizontal strokes, giving it a textured, charcoal-like appearance. The background is a light, textured grey.

On the street once again we pass the Radio Station WWWW, where Alan Wright spins the latest hits, and where Priscilla Tincher gives the news. On now to the Save-A-Lot Department Store, a chain store, whose owners are Brad and Paula Thomas. Here we see salespersons Jeanie Irving and Dale Long doing respectfully at their posts. Next, we come to Yew Nork High School, as we see Principal Susan Kershner trying to cope with unruly students and teachers. There seems to have been some disturbance over an unknown object found in someone's soup at the cafeteria, where the chef is George Thomas, and his cooks are John Walker and Christine Taylor and Emma Young. Passing on through the town, we see Johnny Totten pulled to the side of the road unbending his fender, while Deputy Sheriff Tesry Van Reenan looks at the pole he just hit and estimates damages. Next, to Doctor Charles Wilfong's residence where he and his wife are entertaining guests, Jeff Shaw, Annette Shifflett, Mike Totten, and Larry Offut. Down the street we find Lee Good and Donald Pritt waiting on a bus in front of the Hotel de Yew Nork, owned by Kris Kuhlken. Randall Nottingham and Johnny Puffenbarger are his bell boys and Jan Millican is his clerk. In the lobby we find Chris Mullens registering under an assumed name. Now, for a visit to the optometrist, Jan Rosencrance, we find Debby Varela and Robert McClure fumbling for a chair as Janetta Williams tries to keep her cool as receptionist. Continuing on to the New and Used Car Lot, we see Jeff Weiford trying to get a price reduction out of Sherry Wyatt, who owns the place, while Alberta Varner snakes off with a beaut' of a 43 Chrysler. Next, we come to the Yew Nork Cafe, owned by Sally Lambert and managed by Carolyn McLaughlin. It has Gloria Moats and Linda Shue as waitresses. One of our few remaining stops is the hospital where Drs. Mike McLaughlin, Gary Taylor and Karen Scott, take on an overload of patients including Joe McMillion, in because of a Honda wreck; Mary Ann Lightner, suffering from an unknown ailment; Mildred Ryder, recovering from tonsilectomy, and George Sewell, who is in for a busted eardrum from playing his guitar too loud. But, the good doctors have plenty of help from Nurse Rachael Taylor and aide Debbie Sharp. Next stop, Yew Nork International Airport where ticket agents Earl Sharp and Leona Sharp, are selling one way tickets to nowhere to Diana Simmons and Kenny Thompson, while pilot Ed Turner and co-pilot David Stanley make final preparations for take off. Meanwhile, the stewardesses, Mary Taylor, Sandy Woods, and Mary Vandevender prepare stiff drinks for Harrison Varner, who is trying his skills at wing walking on this trip. Well, you've had a look at our town. How do you like it? Think it's impossible. Maybe so, but, impossible or not, our town had all the necessary ingredients to make it except possibly the name Yew Nork.

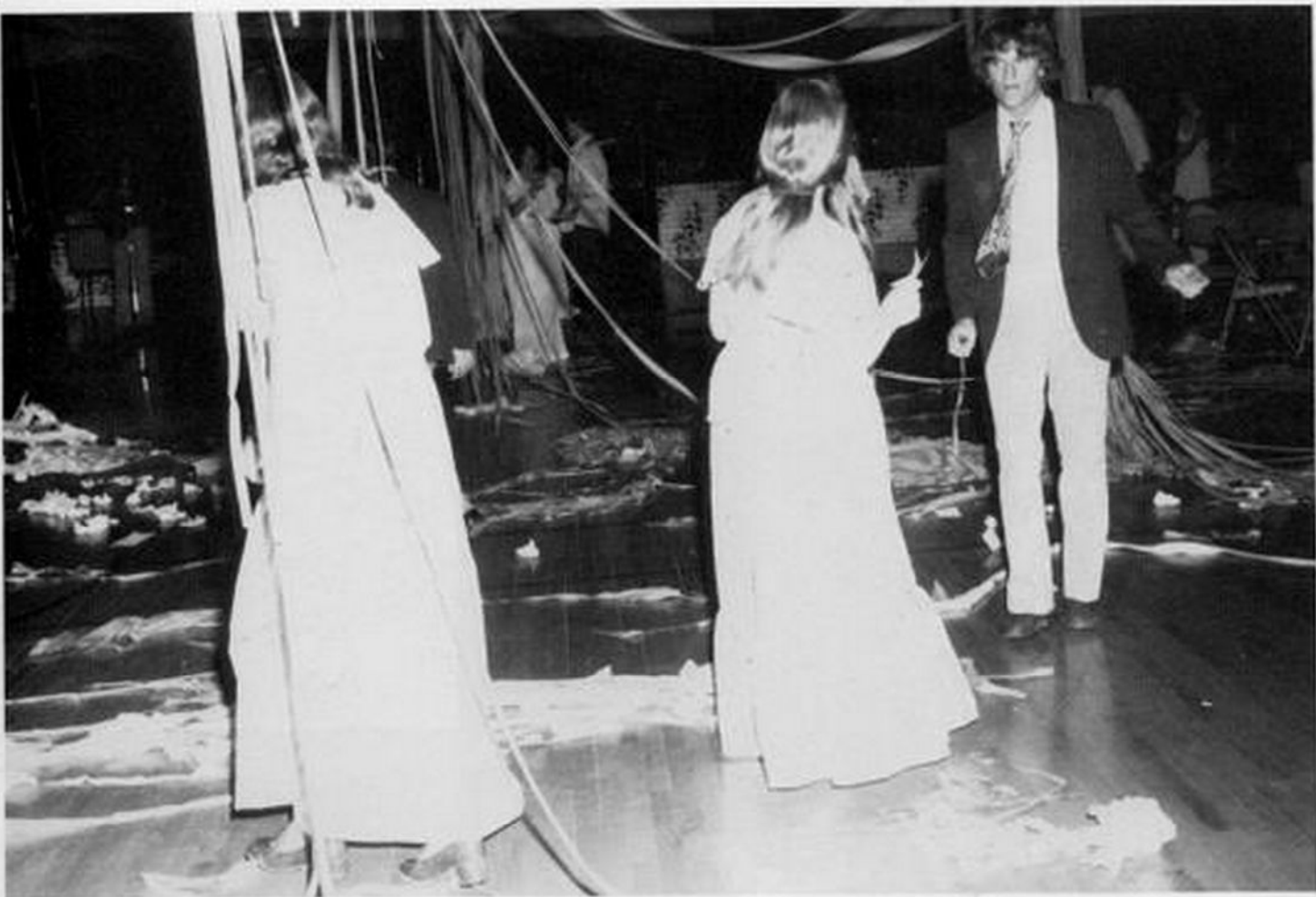


PROM 1976



"Music by Phornix"













PROM COMMITTEE

JUNIOR CLASS OFFICERS

Steve Gillispie
Tom Valencia
Ronnie VanReenan
Cindy Galford

HOMEROOM SPONSORS

Cindy Sewell
Teresa Beale
Peggy Hovatter
Albert Pondexter
Teresa Sheets
Debbie Raiston



Juniors

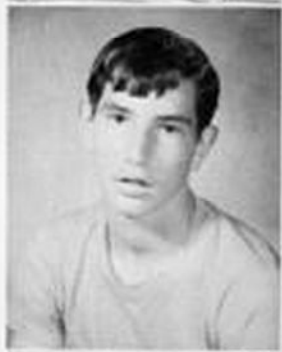
JUNIORS



Mike Albee
Larry Arbogast
Ricky Barkley
Vickie Barkley



Teresa Beale
Rebecca Bennet
Barbara Beverage
Marty Beverage



Ricky Beverage
Shirley Beverage
Kathy Biggs
Patty Brock



Charles Brockway
Earl Burns
Scotty Buzzard
Wanda Buzzard



Brenda Carr
Terry Carr
Timmy Cassell
Peggy Chestnut

JUNIORS



Eve Cloonan
Frank Cook
Tammy Crist
Frank Cummins



Barbara Cutlip
Kenny Cutlip
Melinda Dean
Bertha Dickenson



John Dilley
Marvina Dots
Cheryl Dunbrack
Mary Evans



Lewis Fromhart
Guy Fultz
Bobby Galford
Cindy Galford



Earl Galford
Julia Gibson
Steve Gillispie
Paul Goldizen

JUNIORS



Steve Goode
Connie Grimes
Anna Gum
Mary Hill



Curtis Hively
Roxanna Hoffer
Peggy Hovatter
Jane Jeffries



JoAnna Johns
Carmen Johnson
Janet Johnston
Regina Jordan



Phillip Keatley
Jeff Kelley
Carolyn Kellison
Vicki Kerr



Kim Kershner
Julia Kincaid
Tom Kinder
Larry Kramer

JUNIORS



Darrell Landis
Delbert Lewis
Sue Lightner
Debbie Little



Jenell Lusk
Scott Madron
Timmy Marcum
Susie McCarty



Arbie McLaughlin
Jerry McLaughlin
Alan McNeil
Paul McNeil



Sam McPeters
Karen Miller
Carol Moore
Lori Moore



Terry Moore
Carol Mullenax
Ronnie Mullens
Margaret Murray

JUNIORS



Jona Nuckoles
Cathy Patton
Kathy Pennington
Sharon Beverage Phillips



Mike Pollard
Albert Pondexter
Bobby Powell
Debbie Ralston



Maxine Rexrode
Phillip Rittenhouse
Jimmy Ryder
Pat Schaffner



Jeff Scott
Darren Seldomridge
Cynthia Sewell
Diane Shearer



Don Sheets
Teresa Sheets
Johnny Sheets
Roy Shields

JUNIORS



Jim Simmons
Joyce Simmons Corbett
Debra Smith
Wilbur Smith



Eleanor Sparks
Veronica Swink
Amy Taylor
Bill Taylor



Sherrie Taylor
Fred Tibbs
Jeannie Triplett
Jeanene Turley



Bruce Underwood
Tom Valencia
Mona Vance
Roberts Vance



JoAnn Vandevender
Ronnie VanReenan
Rebecca Varner
Rose Varner

JUNIORS



Robert Walls
Lester Waugh
Larry Woods
Tammy Workman



Brenda Wyatt
David Cassell
Ricky Doyle
Tommy Kelley



Sally Moore
Ronald Sharp



JUNIOR CLASS OFFICERS



LEFT TO RIGHT: "Chink" Valencia, vice-president; Ronnie VanReenan, secretary; Steve Gillispie, president. NOT SHOWN: Cindy Sewell, treasurer.

JUNIOR CLASS SPONSORS



LEFT TO RIGHT: Ted Stewart, Linda Stewart, Harold Crist, Linda VanReenan, Lawrence Brannon, Pam Sharpes, Bob Seaman, Sharon Vance, Kenneth Nottingham.



Sophomores

SOPHOMORES



Jamie Abdella
Terrie Albee
Marilyn Anderson
Barton Barlow



Julia Barlow
Tom Barnisky
Kathy Bennett
Danny Beverage



Carolyn Beverage
Eddie Beverage
James Bond
John Bowyer



Kineth Brown
Greg Brubaker
Sylvester Burford
Charles Buryess



Lottie Buzzard
Cheryl Campbell
Albert Carpenter
David L. Cassell

SOPHOMORES



Ellen Caaley
Martin Chestnut
Donna Chocklett
Richard Crews



Betty Ann Crist
Christine Cook
Debbie M. Cutlip
Debra C. Cutlip



Dreams Dean
Ronnie Dean
Robert Dilley
Pam Dumbrack



Richard Faulkner
Debbie Flynn
Mike Fowler
Robin Francisco



Debbie Friel
David Friel
Marvin Friel
Millie Friel

SOPHOMORES



Steven Friel
Terry Friend
Mathew Fromhart
Carol Galford



Cheryl Galford
Cynthia Galford
Karen Galford
Kay Galford



Priscilla Galford
Phillip Gibbon
Rebecca Grimes
Mark Gum



Brenda Hamrick
Gloria Hill
Andrew Hiner
Tina Hirzel



Holly Hise
James Johnson
Polly Johnson
Vicki Johnson

SOPHOMORES



Donna Rodd
Cheryl Ryder
Larry Ryder
Becky Sharp



Donald Sharp
Leta Sharp
Troy Sharp
Ricky Shearer



Vicki Shearer
Vicky Shears
Daryl Shinaberry
Doreen Simmons



Tammy Sizemore
Peggy Slaven
Randy Stemple
Gregg Sutton



Brenda Taylor
Teresa Taylor
Tom Tenney
Becky Terry

SOPHOMORES



Anita Tracy
Teresa Townsend
Mary Turner
Lowell Underwood



Serena Vandevender
Robert Varner
Allison Vrable
Kathy Wagner



James Walls
Adriane Wanless
Mark Waslo
Joyce Wilfong



Kent Wilfong
Gary Williams
Kenneth Williams
Tony Wiley



Daniel Wilson
Pam White
Sandy Wooddell
Oliver Young





OPPOSITE PAGE UPPER LEFT PICTURE, Sophomore Class Sponsors

OPPOSITE PAGE BOTTOM LEFT PICTURE, Sophomore Class Officers







Freshmen

FRESHMEN



Jill Abdella
Cathy Adkinson
Lori Albee
Glen Arbogast
Hazel Auldridge



Jeff Barb
John Barlow
Tammy Beale
Penny Beck
Frank Bennet



James Bennet
Rodney Bennet
Vicki Bennett
Dave Beverage
Ann Biggs



Patsy Boggs
Rhonda Buchanan
Tana Buchanan
Roy Cane
Teresa Carpenter



David Cassell
Sherry Cassell
Wayne Cassell
Gregory Cochran
Troy Cook



Wanda Copen
Jimmy Crews
Katie Crickenberger
Gary Cutlip
John Denn



Brenda Defibaugh
Barbara Dilley
Donna Dilley
Pam Dilley
James Dolan



Craig Doss
Kim Doyle
Carolyn Fowler
Cleva Friel
Louise Fromhart



Bill Galford
Debbie Galford
Grant Galford
Tim Galford
Bobby Gibb



Lester Goode
Vicki Gragg
Jaretta Greathouse
Henry Grimes
Ellen Gum



James Gum
Kenny Hall
Terry Heavner
Phillip Hill
Edward Hise



Bart Hively
Mike Hogan
Teddy Hoover
Jeff Howe
Ricky Irvine



Gloria Jackson
Jeff Jackson
Debbie Johnson
Steven Johnson
James Jordan



Dennis Kane
Jeanne Kellison
Mike Kelly
Scotty Kelly
Ronald Kemp



Michael Kennison
Judy Kennison
Connie Kershner
Ruth Kincaid
Mark Kinder



Becky Kiner
Virgil Lambert
Andy Landis
Bradley Landis
Brian Landis



Barry Lane
Judy Lane
Randall Lewis
Debbie Lusk
Pam Mace



Paul Mace
Connie Madison
Kerwin Madison
Sabrina Martin
Robin Matheny



Brenda McClure
Teresa McCoy
Anna McKinley
Sandra McMillion
Leisha Meeks



Joseph Mitchell
Julian Montgomery
LuAnna Moore
Doug Morrison
Debbie Moyers



Vickie Mullenex
Charlotte Murray
Terry Neal
Gloria Nice
Shawn Nottingham



Richard Orel
Nina Perry
Fred Pritt
Keith Pondexter
David Rittenhouse



Richard Roberts
Gregory Rose
Shirley Roto
Alvon Ryder
Edith Ryder



Patricia Ryder
Mike Ryder
Mary Ryder
David Scott
Henry Scott



William Scott
Pamela Selvaraj
Jacquelyn Sewell
Willie Shank



Felicia Sharp
Jeff Sharp
Kathy Sharp
Lindsay Sharp
Ronnie Sharp



Kevin Shaw
Richard Shearer
Donna Sizemore
Lola Slayton
Carol Smith



Conrad Smith
Eugene Stanley
Timothy Stewart
Eula Stimebing
Bruce Taylor



David Taylor
Naomi Taylor
Jeff Teter
DeWitt Thompson
Lavonda Thompson



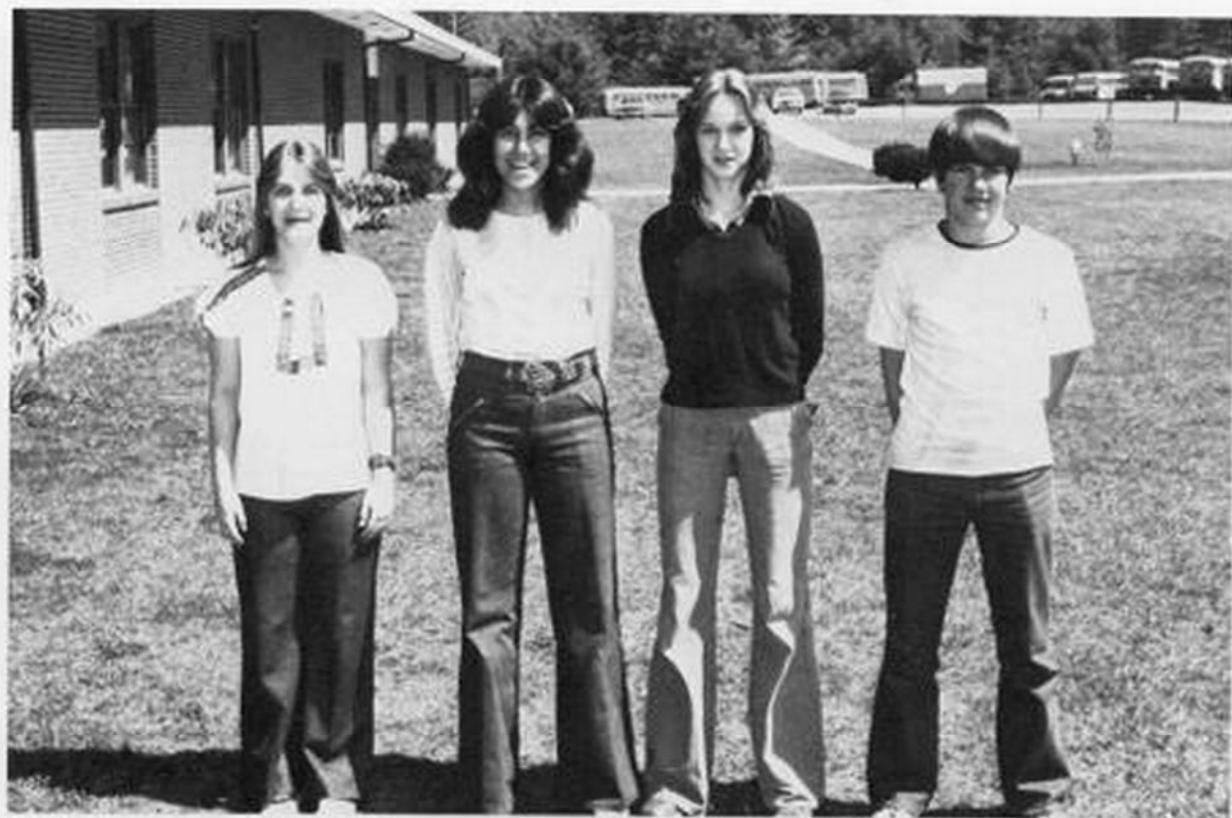
Dana Turley
Forest Woodell
Sherri Woods
Matt Wilson
Micheal Williams



Bill Wilfong
 Lola Wiley
 Ronald Weimer
 Cheryl Warwick
 Bill Walton

Karen Valencia
 Doug Vanreenen
 Amy Vrabie





Freshman Class Officers: Left to Right: Vicki Mullenax, Karen Valencia, Jane Cassell, Bill Galford.



Freshman Class Sponsors: KNEELING: Mrs. Howell, Mrs. Diller, Miss Smith. STANDING: Mr. McElwee, Mr. Fauber, Mr. McMann, Mrs. G. Vance, Mrs. Shafer, Mrs. VanNostran





Bicentennial

Spirit of '76

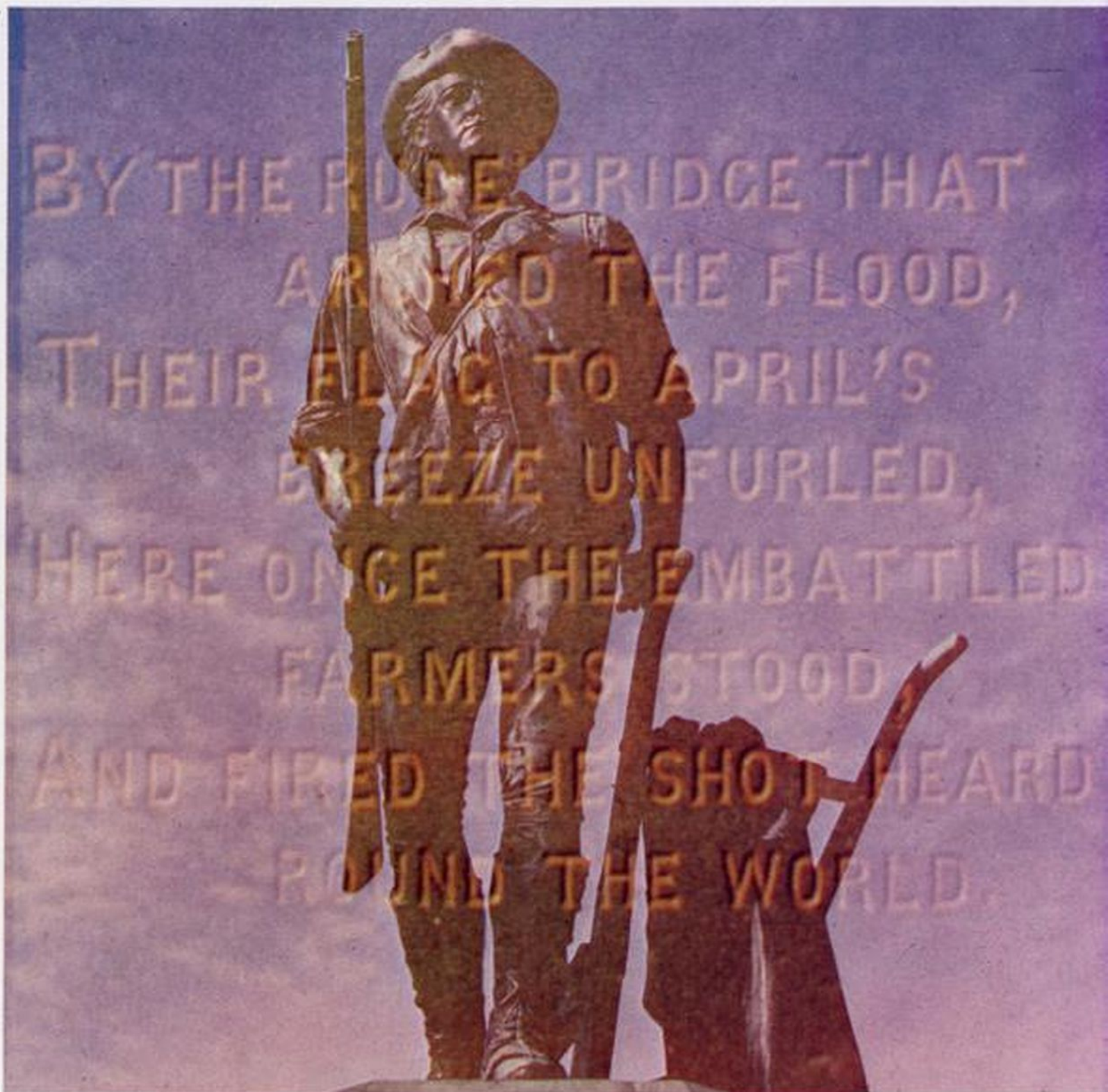
Supplemental color pages prepared to commemorate the 200th anniversary of the United States of America in this bi-centennial year—1976.

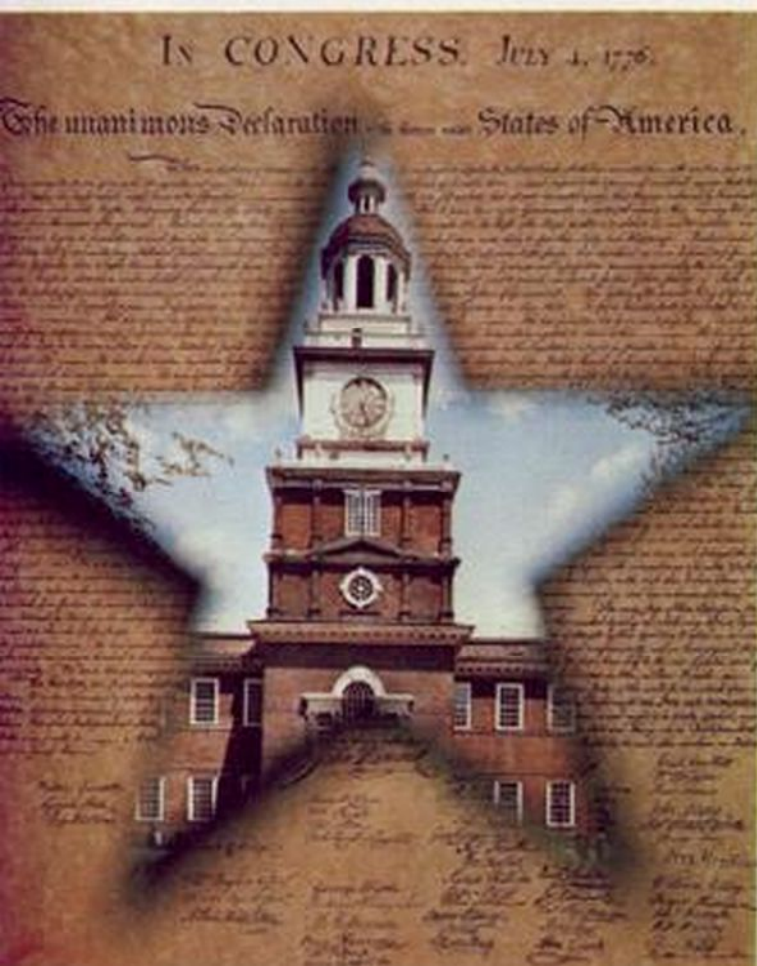


1



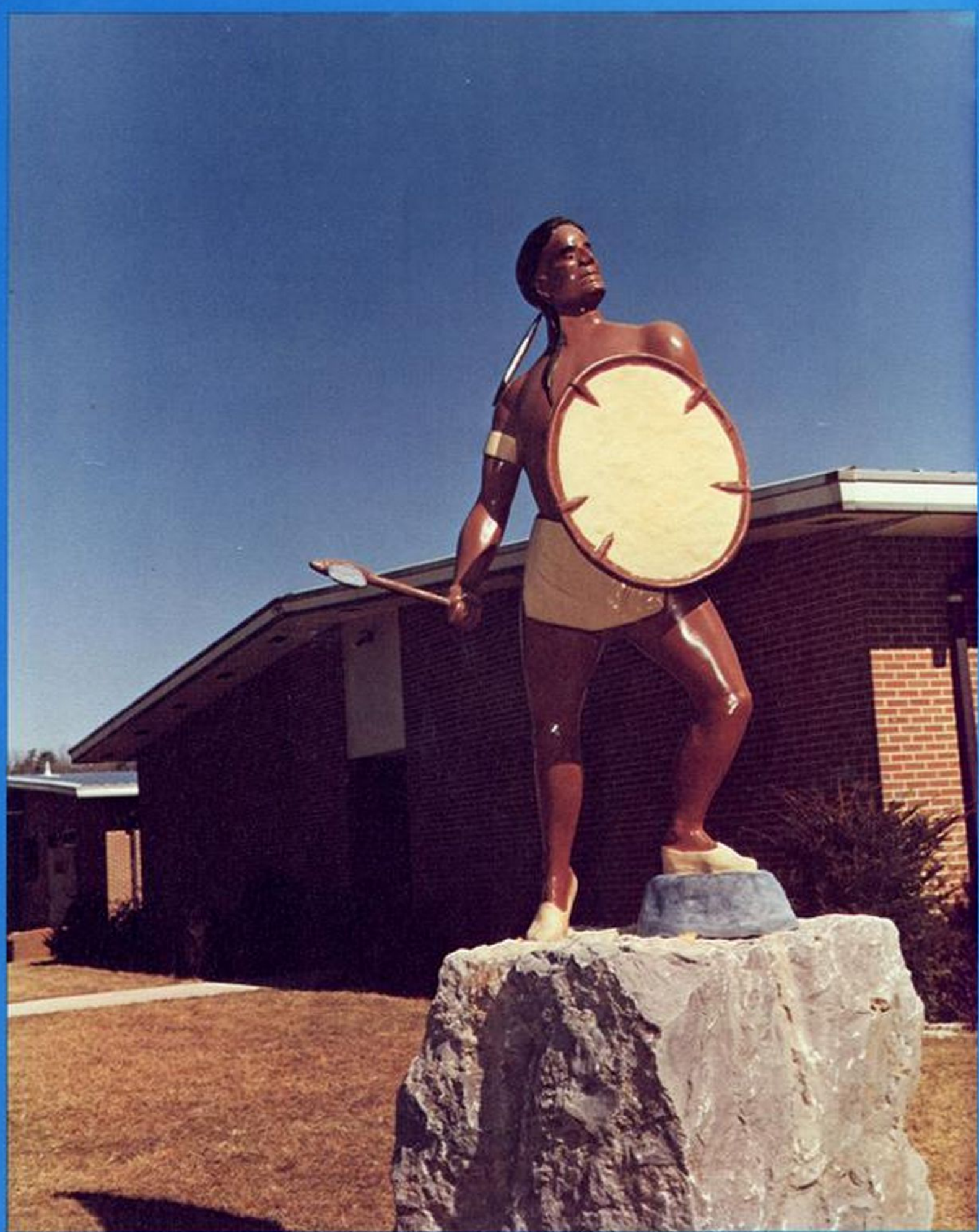
2





6

- 1/ Call of the Minutemen prior to the historic Battle of Lexington.
- 2/ The Battle of Concord Bridge was the first battle of the war.
- 3/ Monument to the Minutemen which stands on the site of the Battle of Lexington, where "the shot heard round the world" was fired April 19, 1775.
- 4/ The signing of the Declaration of Independence, July 4, 1776.
- 5/ Independence Hall, Philadelphia, where the Continental Congress convened to decide a course of action.
- 6/ Benjamin Franklin, John Adams and Thomas Jefferson working to revise



DEDICATION

We would like to dedicate our 1976 Warrior Yearbook to the memory of one of the finest teachers ever to teach in Pocahontas County. Mr. Sidney Goodwyn, a native of Pocahontas County, served our youth, for over 35 years. Mr. Goodwyn took pride in our children, had dreams for them, and sacrificed of himself for them. Through Mr. Goodwyn many people both students and colleagues became aware of what living is.

Randall Lewis



*"Stand Your Ground . . .
If They Mean to Have a War,
Let It Begin Here."*

Capt. John Parker

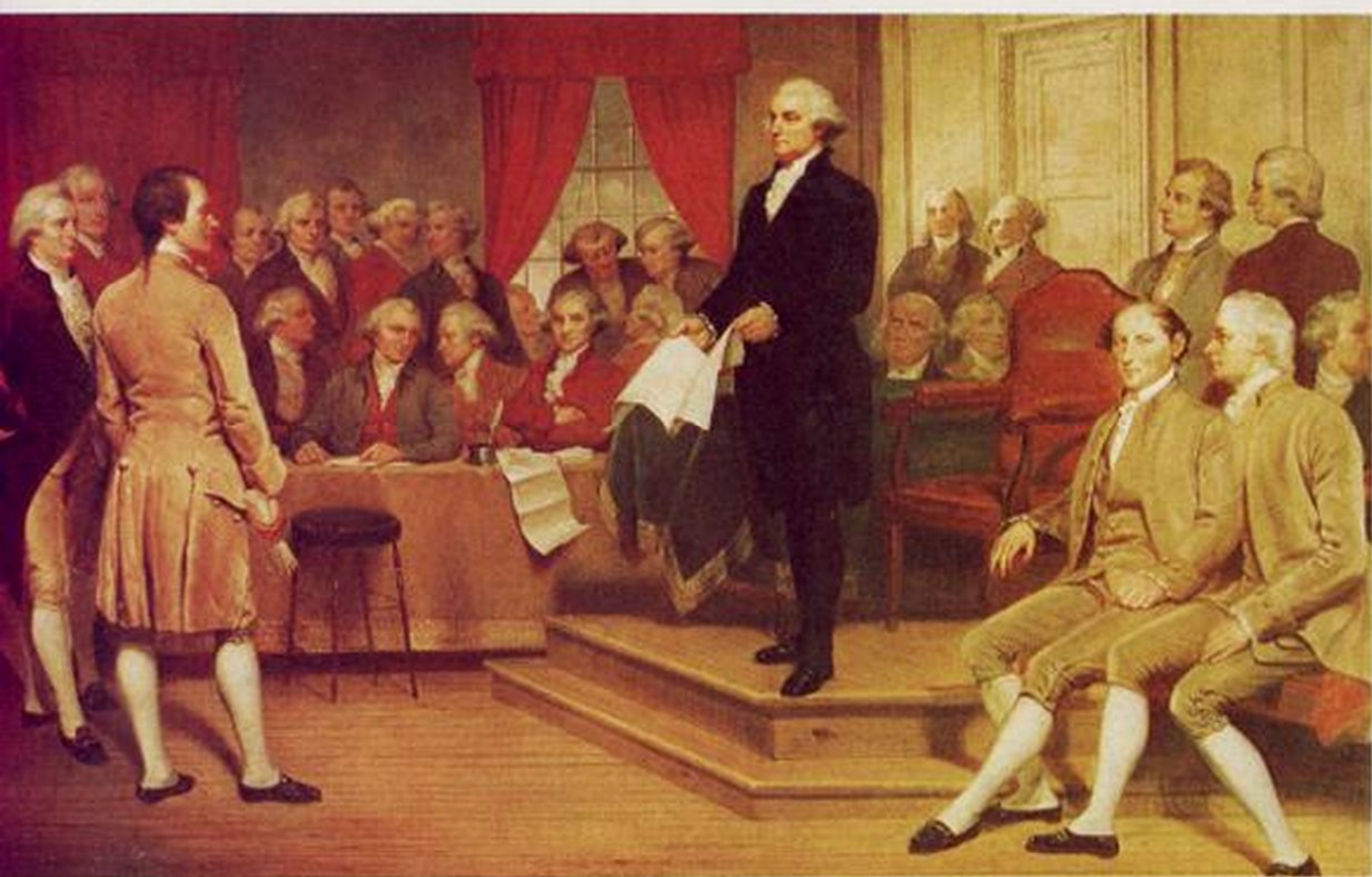
1/ Capt. John Parker uttered those words as the colonial militia under his command prepared to meet the British troops at Lexington. Those words and the painting—*Spirit of '76*—exemplify the dedication and determination of the American patriots in their fight for independence. The colonies had organized to express their grievances in an effort to resolve the differences within the framework of the Empire. Several of the colonial legislatures had instructed their delegates to the Continental Congress in Philadelphia to oppose any move toward independence. The movement for independence was gaining strength and following the publication of Thomas Paine's *Common Sense*, which argued for colonial sovereignty, a resolution was adopted and a committee of five appointed to draft a declaration of independence.

2/ General Washington, who had been appointed commander-in-chief of American forces by the Second Continental Congress, was a brilliant military strategist. It was his decision to take his Continentals across the Delaware River on Christmas night which resulted in the first major colonial victory. That victory at Trenton over Hessian mercenaries gave the ragged army renewed vigor. Supported chiefly through the printing of Continental currency, the colonial army also went through the personal fortunes of many American patriots—among them Washington, Jefferson, Richard Henry Lee and John Adams. These fortunes were donated to the cause of liberty—a cause supported by about one-third of the American population which was near 2,000,000. Another one-third remained loyal to the English crown and the remainder were apathetic. Despite many defeats, the colonies managed to keep an army in the field as a symbol of American resistance, to guarantee a negotiated rather than dictated peace.



1





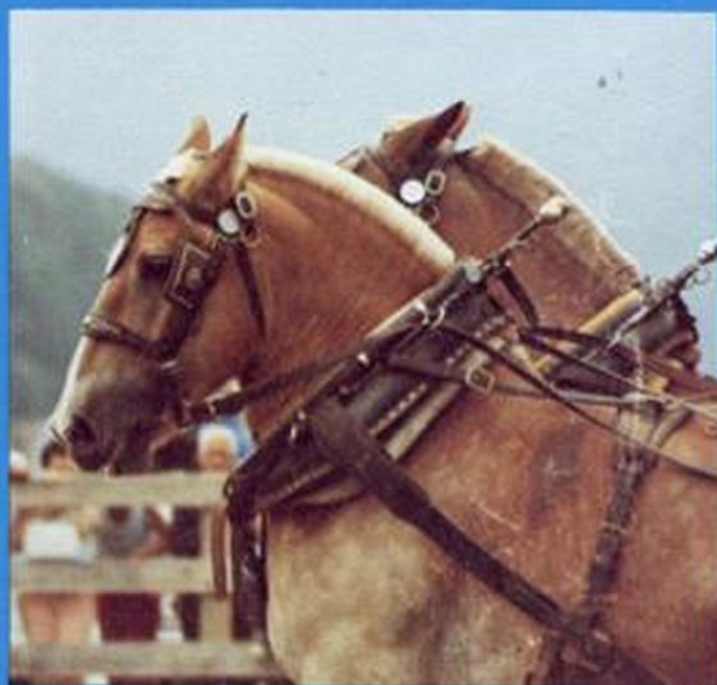
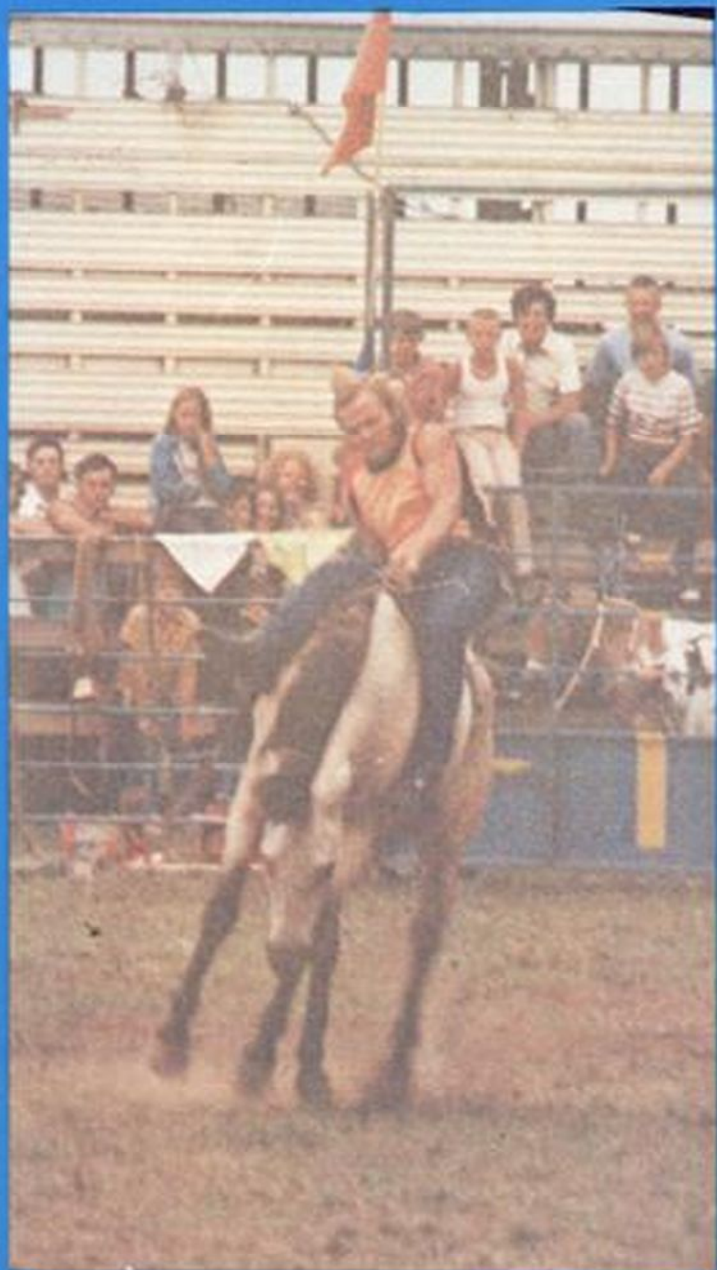
*“ . . . Give Me Liberty
or Give Me Death!”*

Patrick Henry

3/ Following the victory at Yorktown, Washington refused the offer of his troops to become king and returned to Philadelphia to aid with the establishment of a permanent government for the new republic—a loose alliance of sovereign states held together by the Articles of Confederation. An envoy composed of Benjamin Franklin, John Adams and John Jay was sent to negotiate with the British. It was not until 1783 that the peace agreement, known as the Treaty of Paris, was signed, guaranteeing the sovereignty of the United States of America. The Articles of Confederation, despite many weaknesses, served to unify the states until 1787 when a special convention was held at Independence Hall in Philadelphia to revise them. The meeting was attended by fifty-five of the most-prominent men of the day. Twenty-nine of the delegates representing a majority of the states met on May 25 and decided to draft an entirely new constitution rather than amend the Articles of Confederation. The meeting then became known as the Constitutional Convention.

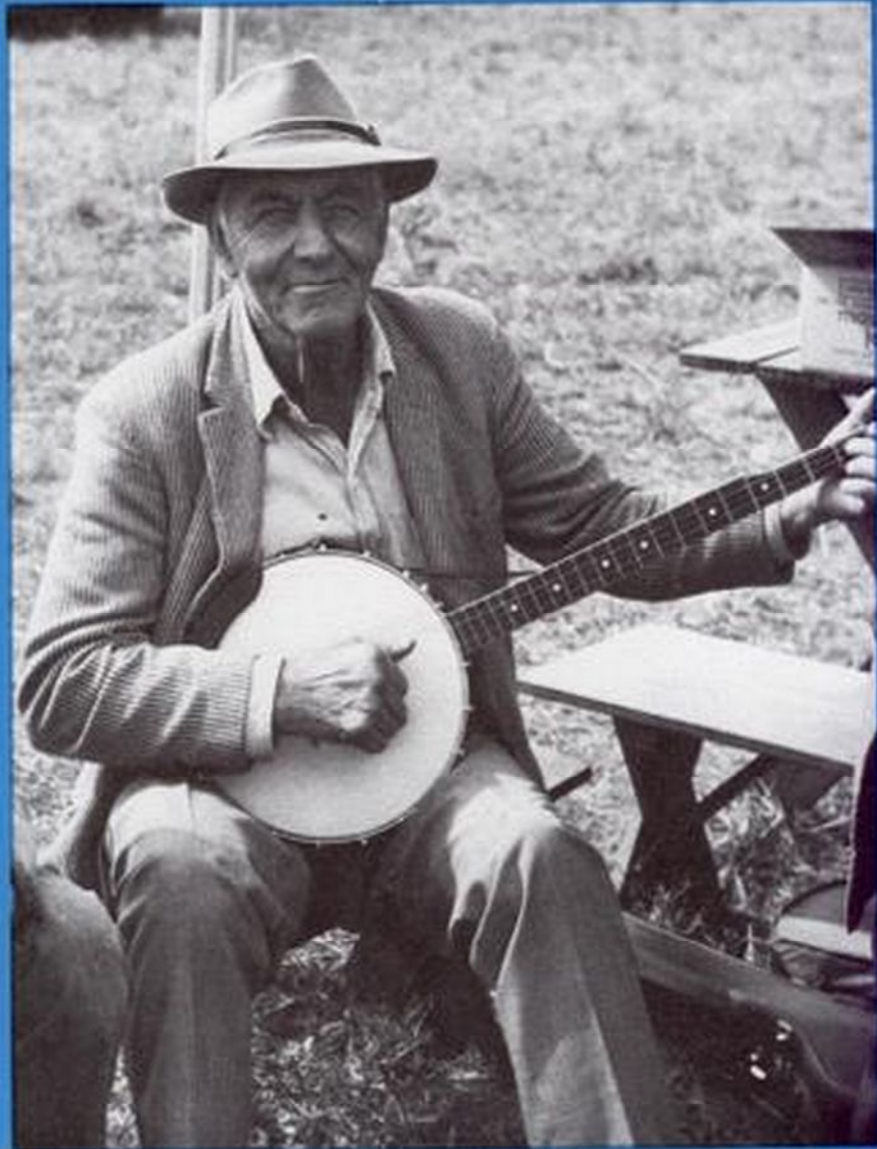
4/ The men who assembled for the Constitutional Convention were an illustrious group with nearly every delegate a person of prominence in his home state. A large majority favored a strong central government. After four months of debate, on September 17, 1787, the new constitution was completed. In a little more than four months, six states had ratified the new constitution. Despite the good beginning, the fight for ratification was bitter and it was not until September 13, 1788, that the necessary two-thirds majority of the states had approved the document and Congress could call for states to choose their electors and congressmen. Several of the states had ratified the constitution with the provision that it would be amended. Thus, as one of its first official acts under the new constitution, the Congress added the first ten amendments known as the Bill of Rights. Washington was unanimously elected President and a new nation was launched on a course of democracy.



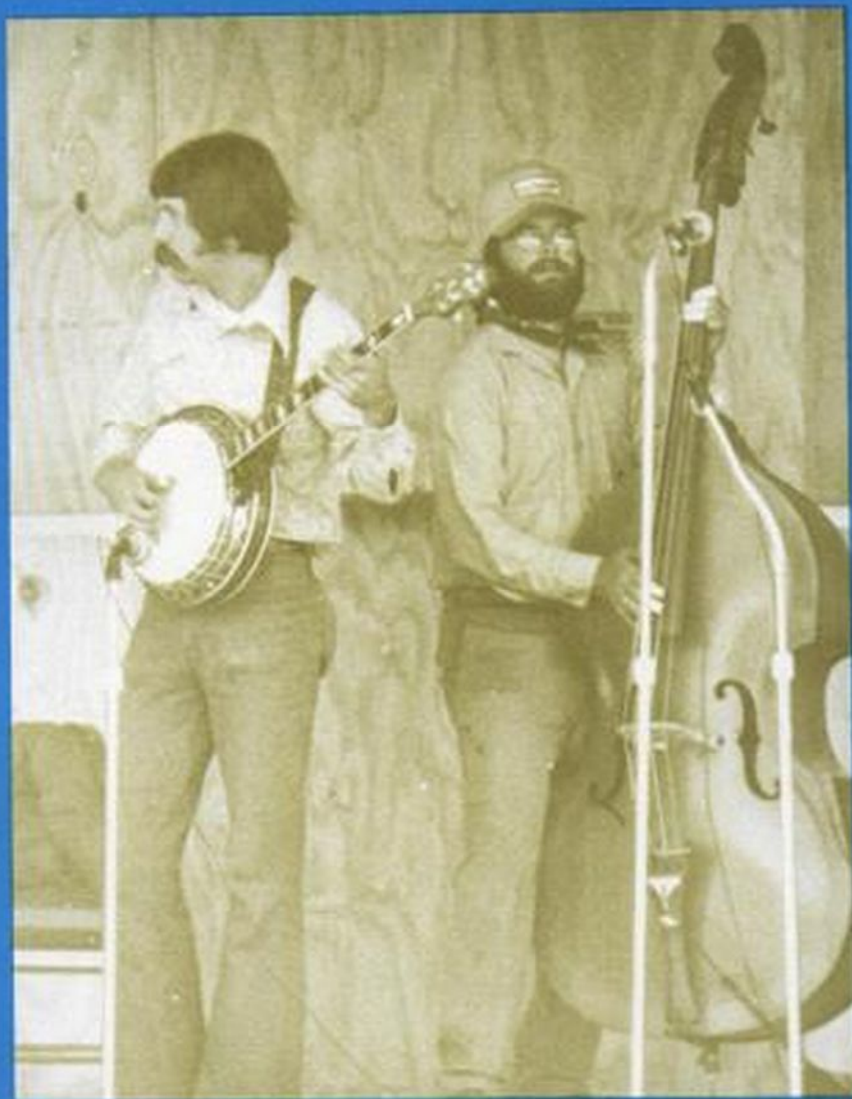
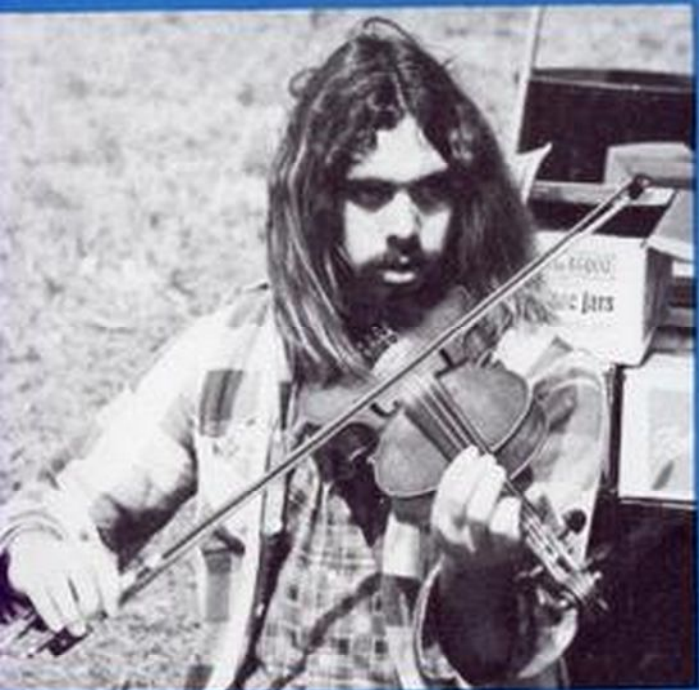




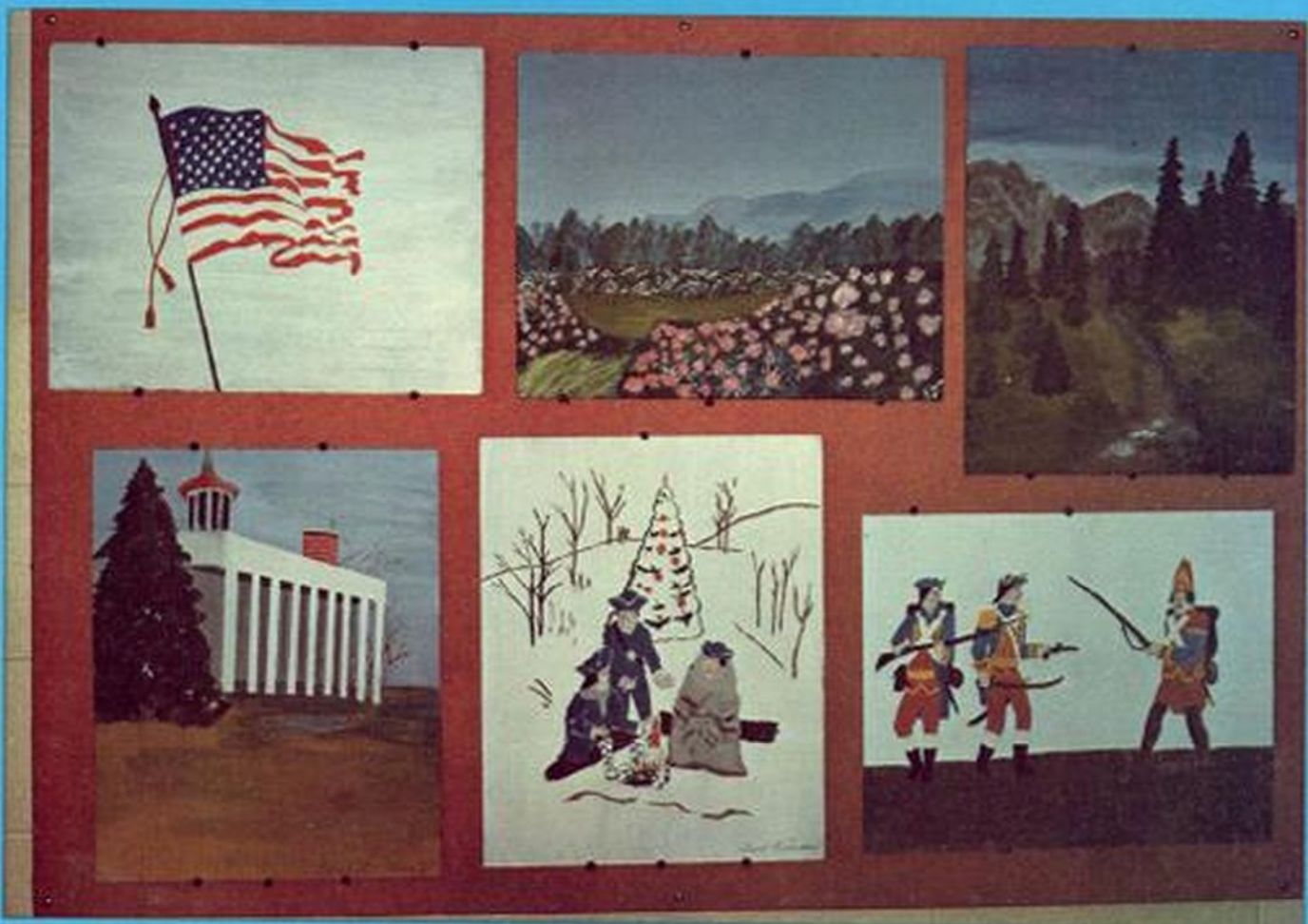


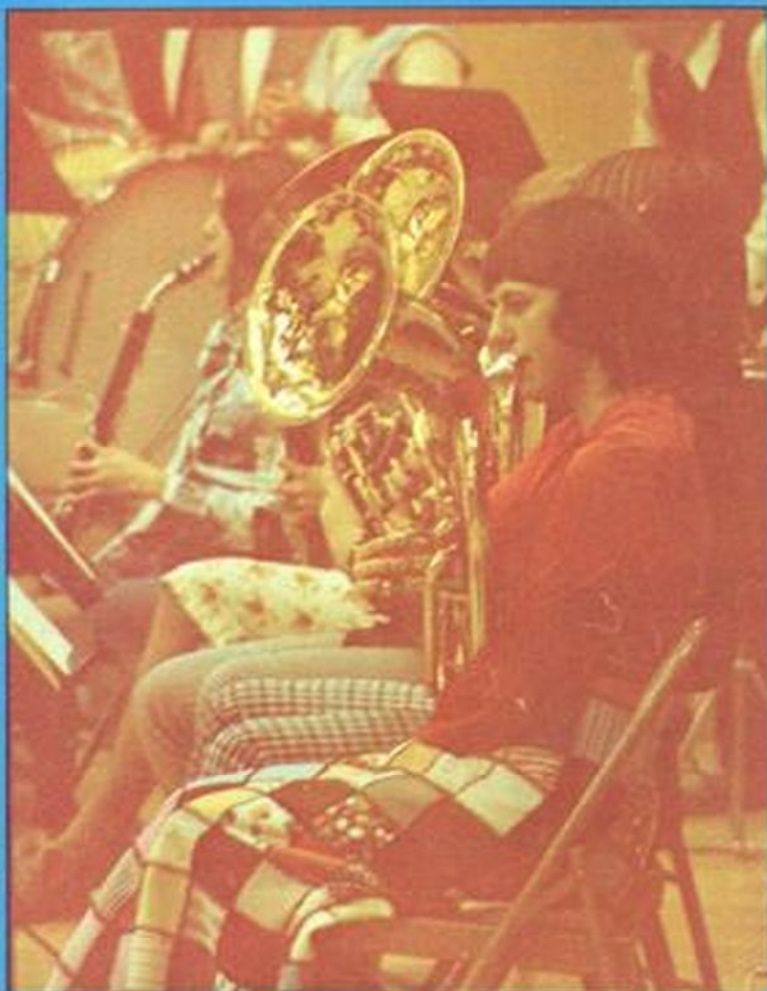


Each year the Mountain Music Festival in Huntersville gives us a taste of our mountain heritage. Dwight Diller, TOP LEFT, is a talented and versatile self-taught musician. He is a local musician who has developed his musical techniques through the instruction and guidance of other local musicians. Sherman Hammons, TOP RIGHT, and Lee Hammons, LOWER LEFT have played a major part in Dwight's learning to play banjo and fiddle. Molly Diller, LOWER RIGHT, also plays banjo.



The Music Festival attracts musicians from great distances. Each musician comes to share his talent and his own techniques. Tony DeMarco, TOP LEFT, is from New York, and plays Irish fiddle music. Mike Burns is PICTURED at the LEFT in the CENTER. To the RIGHT are Richard Hefner and Dwight Diller, two members of the local Bluegrass group "The Black Mountain Bluegrass Boys".





On the **OPPOSITE PAGE** are paintings done in Mrs. Van Nostram's art class to celebrate the bicentennial. The **UPPER PICTURE** on this page is the brass section of the band taken at the spring concert. The **LOWER** picture is the woodwind section.



1975 HOMECOMING QUEEN



VIRGINIA CLOONAN



Virginia Cloonan escorted by Jeff Weiford



Mathew Burns and Michelle McLaughlin



First Runner-Up
Paula Phillips escorted by David Jones

Second Runner-Up
Mary Jane Oref escorted by Billy Sharp



Freshman Attendant
Karen Valencia escorted by Scotty Kelly



Sophomore Attendant
Kim Nottingham escorted by Larry Ryder



Junior Attendant
Eva Cloonan escorted by Curtis Hively

Senior Attendant
Sherry Wyatt escorted by Greg Curry



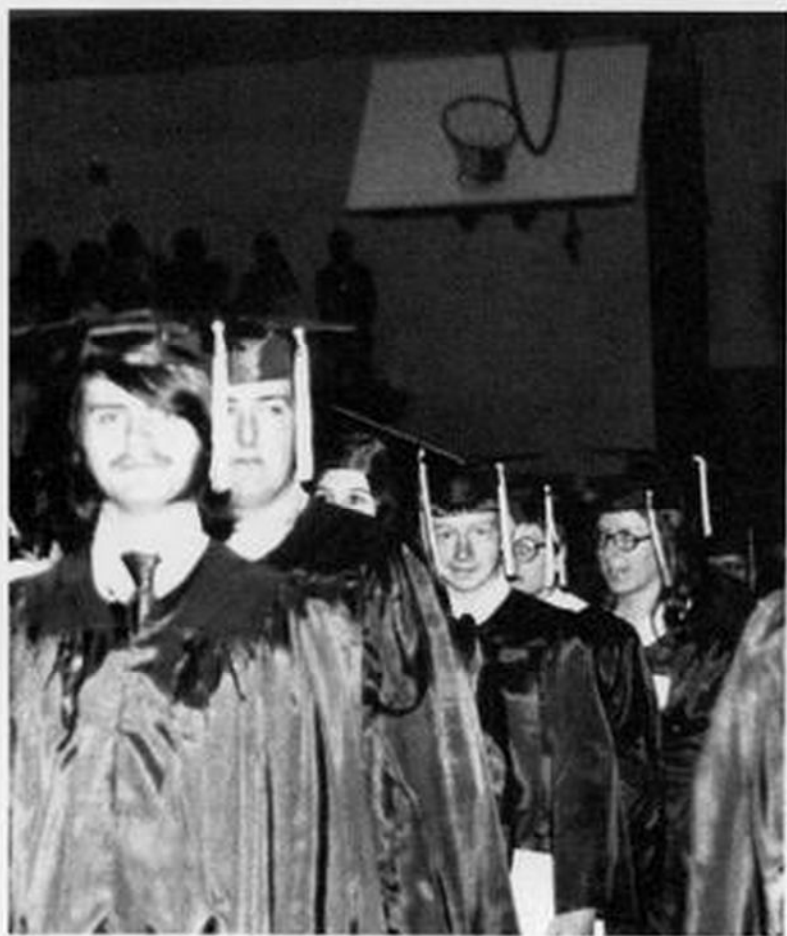


Homecoming Dance



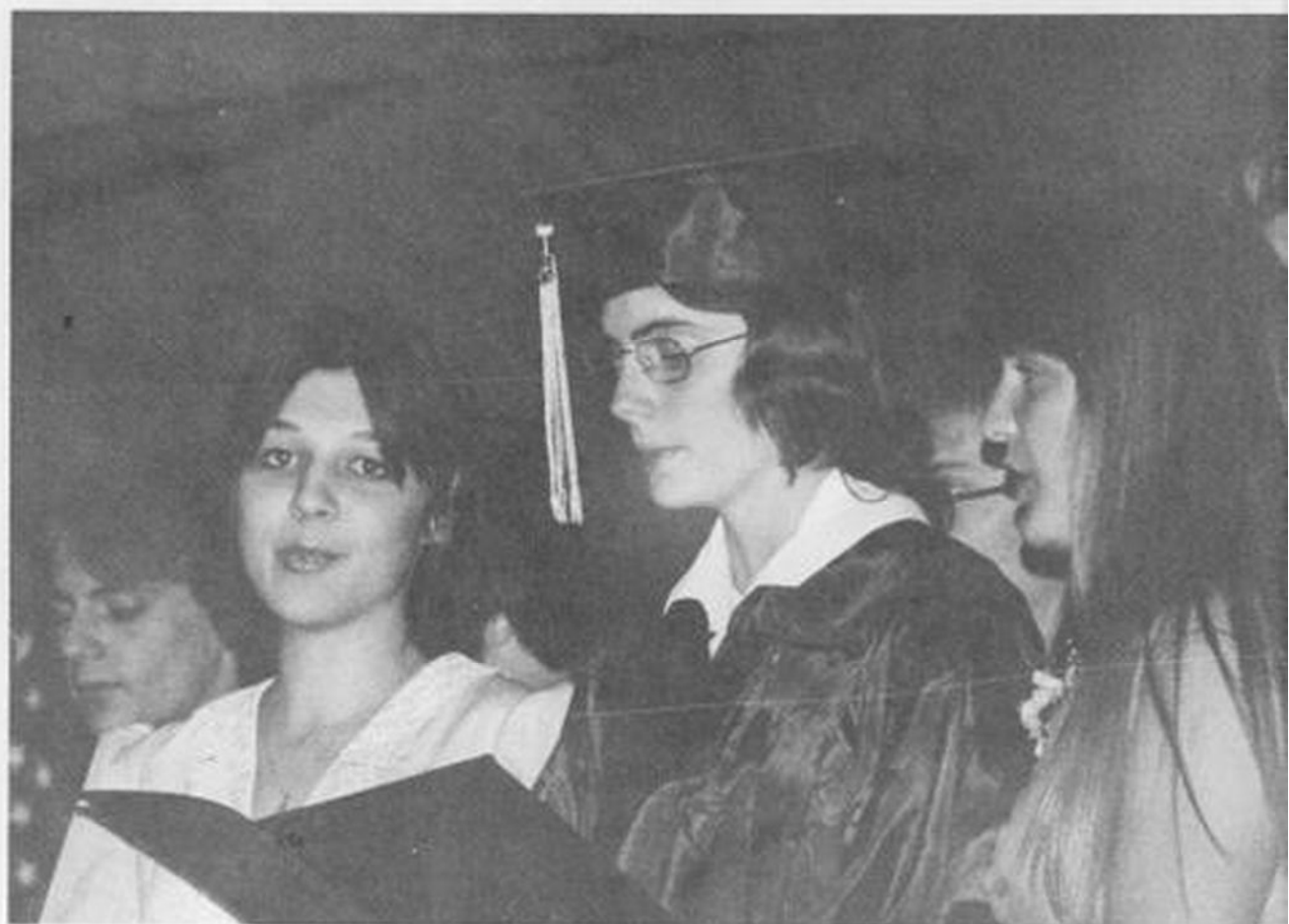
Homecoming Game

GRADUATION

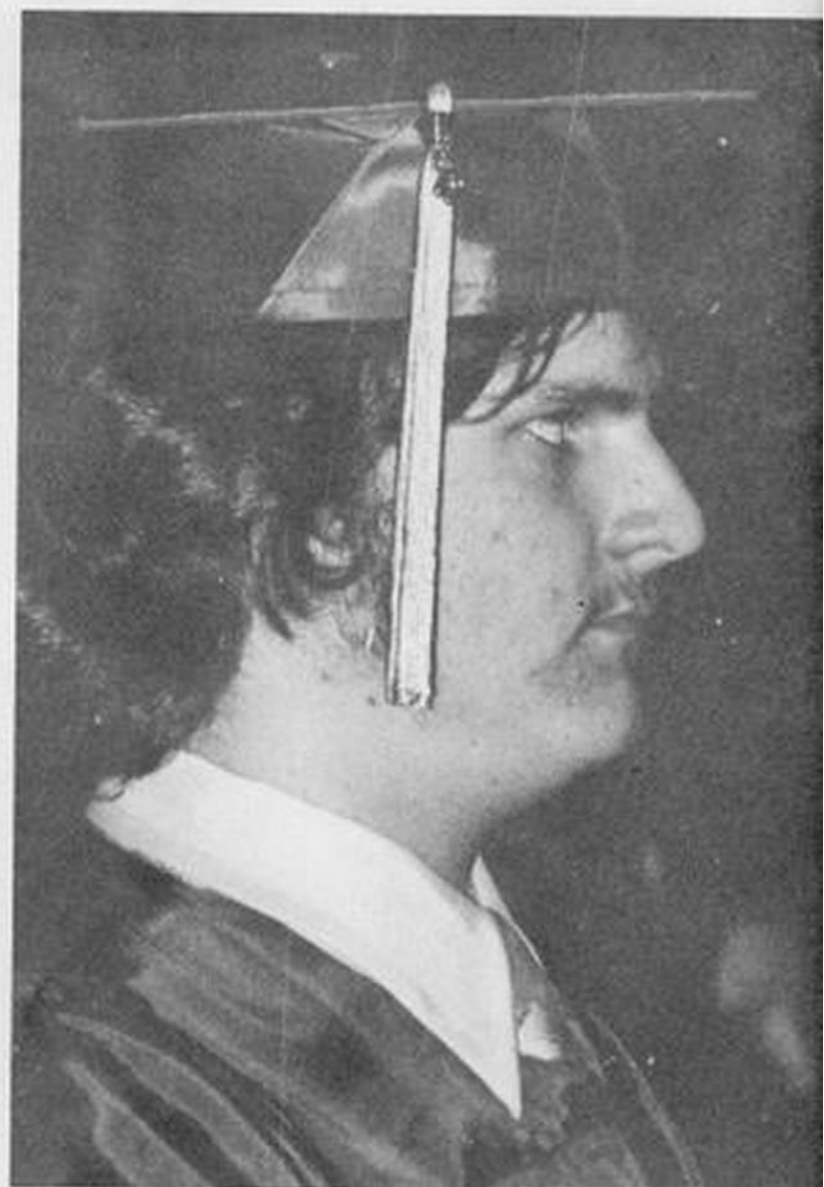




GRADUATION









Sports

FRESHMAN FOOTBALL



1st ROW- Left to right, Julian Rittenhouse, Mike Ryder, Rick Irvine, Ronnie Sharp, Conrad Smith, Mike Williams, Wayne Cassell. 2nd ROW- Glenn Arbogast, Bill Galford, Mark Kinder, Craig Doss, Richard Orel,

Phil Hill, Coach Workman, 3rd ROW- Chuck Brockway, manager, Julian Montgomery, Greg Rose, Shawn Nottingham, Jeff Barb, Bucky Galford, Scotty Kelly.

JV AND FRESHMAN SCOREBOARDS

FRESHMAN SCOREBOARD

PCHS 36	Elkins	55
PCHS 64	Richwood	33
PCHS 44	Lewisburg	39
PCHS 54	White Sulphur	60
PCHS 47	Elkins	37
PCHS 45	Webster County	39
PCHS 55	Webster County	30
PCHS 57	Richwood	37
PCHS 43	White Sulphur	41
PCHS 48	Lewisburg	36
PCHS 65	Nicholas	48

JV SCOREBOARD

PCHS 60	Bath County, Va.	47
PCHS 51	Elkins	54
PCHS 39	Richwood	48
PCHS 61	Union	58
PCHS 74	Highland Co., Va.	56
PCHS 42	Tygarts Valley	50
PCHS 62	Greenbrier West	59
PCHS 59	Franklin	43
PCHS 26	Petersburg	37
PCHS 47	Webster County	48
PCHS 55	Tygarts Valley	38
PCHS 81	Franklin	41
PCHS 58	Bath Co., Va.	43
PCHS 46	Greenbrier West	50
PCHS 67	Webster County	45
PCHS 69	Union	31
PCHS 69	Richwood	84
PCHS 46	Petersburg	51



1976 VARSITY



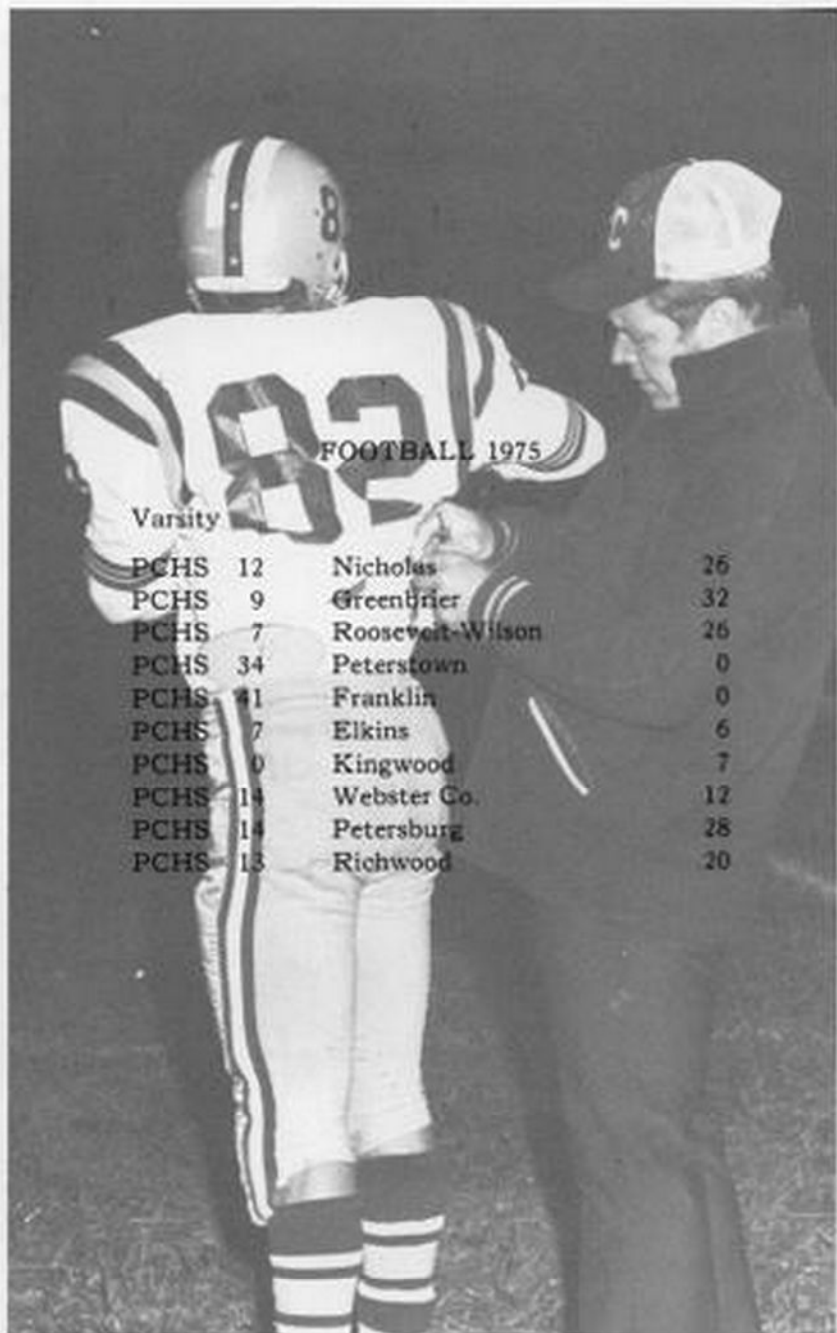
1st ROW - Left to right, Forrest Mullenax, Joe McMillion, Albert Pondexter, Jim Ryder, John Puffenbarger, Jim Cutlip, Paul Kesler, Steve McCoy, Mike McLaughlin, Jeff Shaw, Chris Mullens, D. C. Gum, Fred Tibbs, Rick Doyle. 2nd ROW - Arbie McLaughlin, manager, Greg Brubaker,

William Dilley, David Lee Cassell, Kenny Cassell, Mike Buzzard, Ronnie VanReenan, John Dilley, Lewis Fromhart, Thomas Barnisky, Jerry Pennington, Tom Valencia, Billy Sharp, manager, 3rd ROW - Coach

FOOTBALL



...doddell, Larry Ryder, Eddie Beverage, Mark Gum, Andrew Hiner,
 ...rk Waslo, Pete Chestnet, John Manly, Matt Fromhart, Robert Myers,
 ...ch Friel, Chuck Brockway, manager.



Varsity

PCHS	12	Nicholas	26
PCHS	9	Greenbrier	32
PCHS	7	Roosevelt-Wilson	26
PCHS	34	Peterstown	0
PCHS	41	Franklin	0
PCHS	7	Elkins	6
PCHS	0	Kingwood	7
PCHS	14	Webster Co.	12
PCHS	14	Petersburg	28
PCHS	13	Richwood	20



SENIOR FOOTBALL

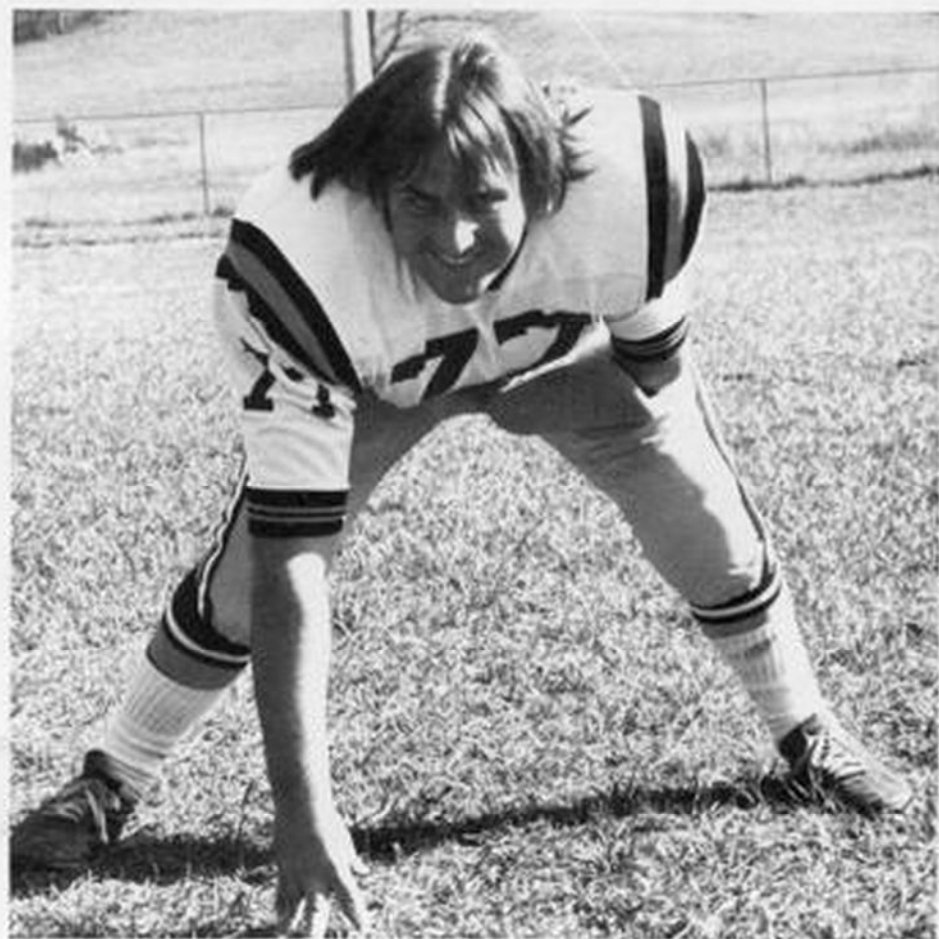


UPPER LEFT- Jim Cutlip



UPPER RIGHT- Paul Kester

LOWER RIGHT- Steve McCoy



SENIOR FOOTBALL

UPPER RIGHT- Jim Ryder

LOWER LEFT- Forrest Mullenax

LOWER CENTER- Chris Mullens

LOWER RIGHT- Mike McLaughlin



SENIOR FOOTBALL



UPPER LEFT- John Puffenbarger

UPPER RIGHT- Joe McMillen



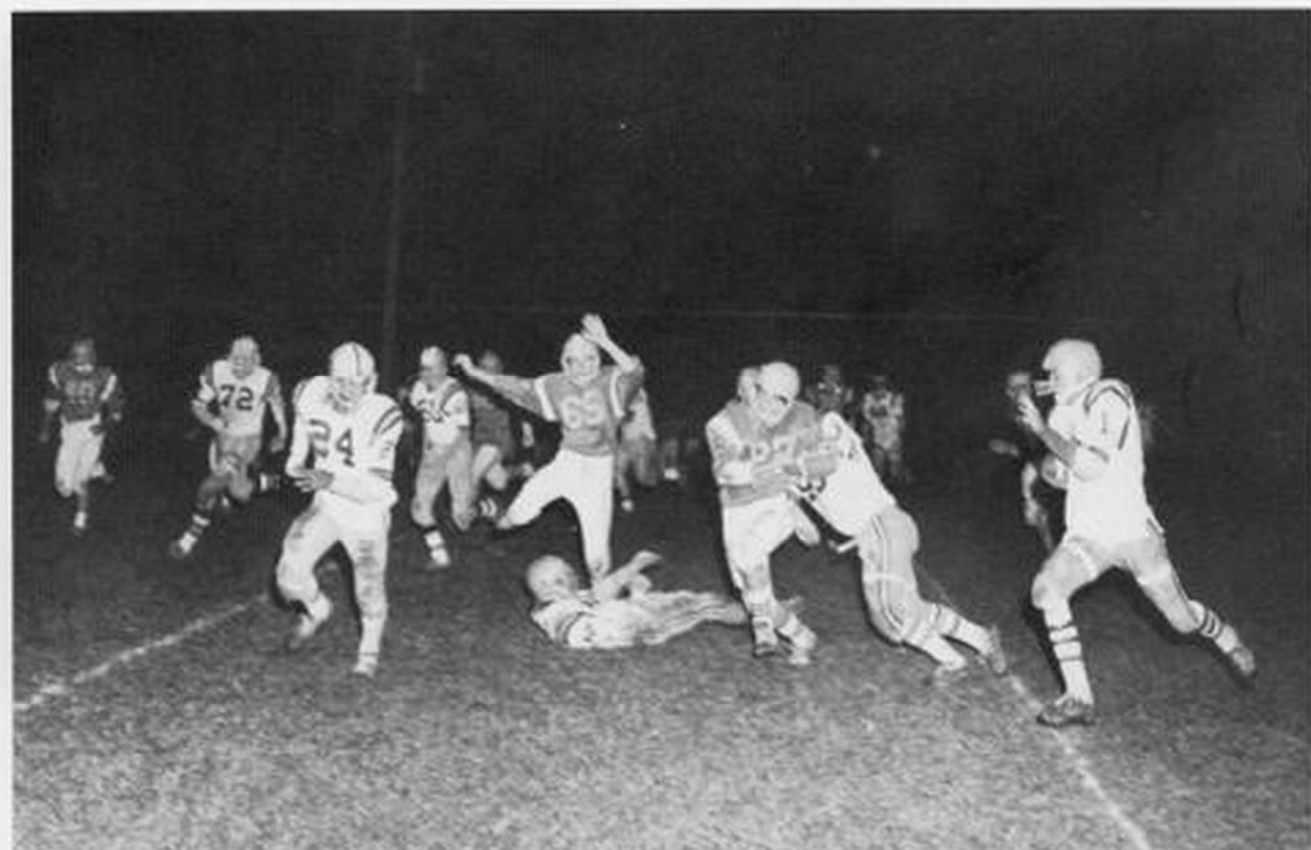


ABOVE LEFT- Jeff Shaw

ABOVE RIGHT- D. C. Gum







VARSITY BASKETBALL



1st ROW-Coach Dick Groseclose, Assistant Bob Welder. 2nd ROW-Left to Right, Albert Pondexter, D. C. Gum, Pat Schaffner & Scott Madron, Managers. 3rd ROW-David Jonese,

Steve Gillispee, Tom Valencia, William Dilley. 4th ROW-Rick Doyle, David Lee Cassell, Kenny Cassell, Jim Cutlip, Jim Ryder.

P.C.H.S.	Opponent	
81	Bath Co.	55
92	Elkins	76
63	Richwood	83
95	Union	77
93	Highland Co.	60
81	Tygarts Valley	68
66	Greenbrier West	76
58	Braxton Co.	63
81	Franklin	63
57	Petersburg	89
88	Webster Co.	77
58	Tygarts Valley	40
72	Franklin	61
97	Bath Co.	88
67	Greenbrier West	69
69	Webster Co.	67
54	Braxton	48
107	Halon	42
73	Richwood	80

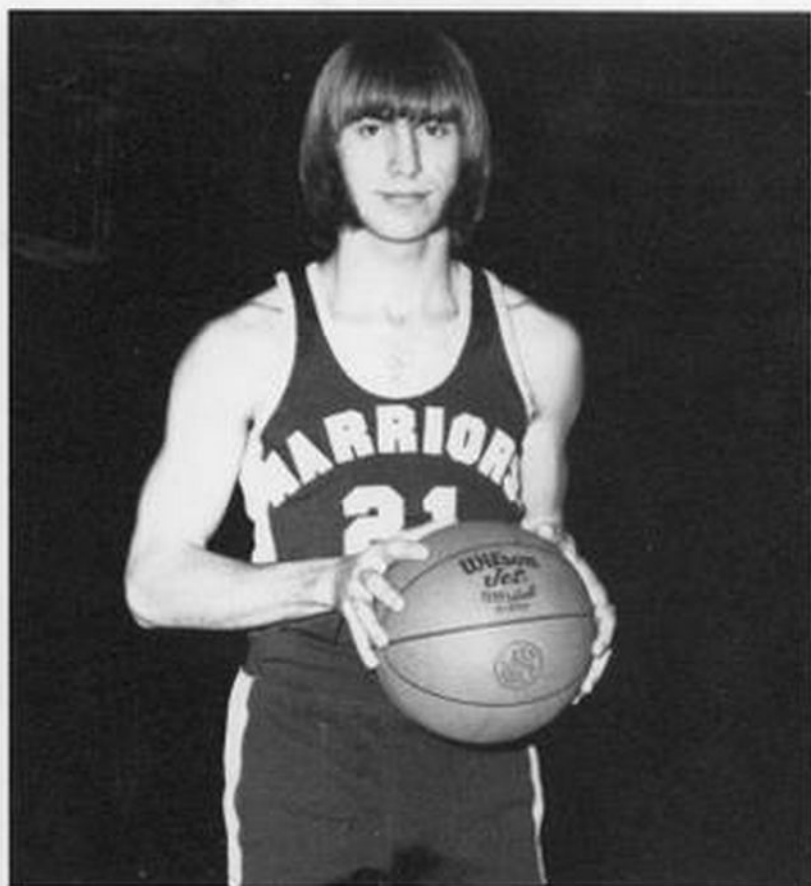


Head Coach- Dick Groseclose

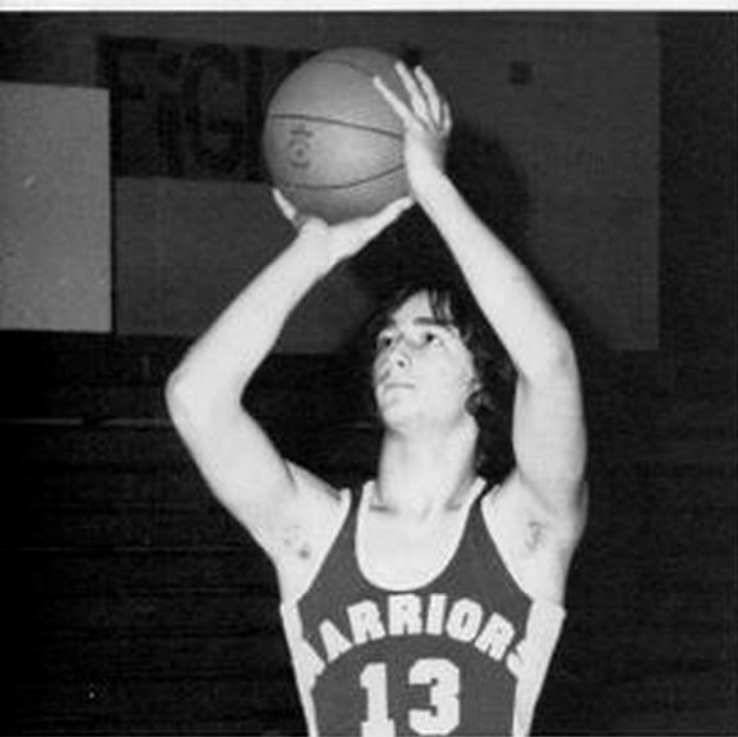
SENIOR BASKETBALL



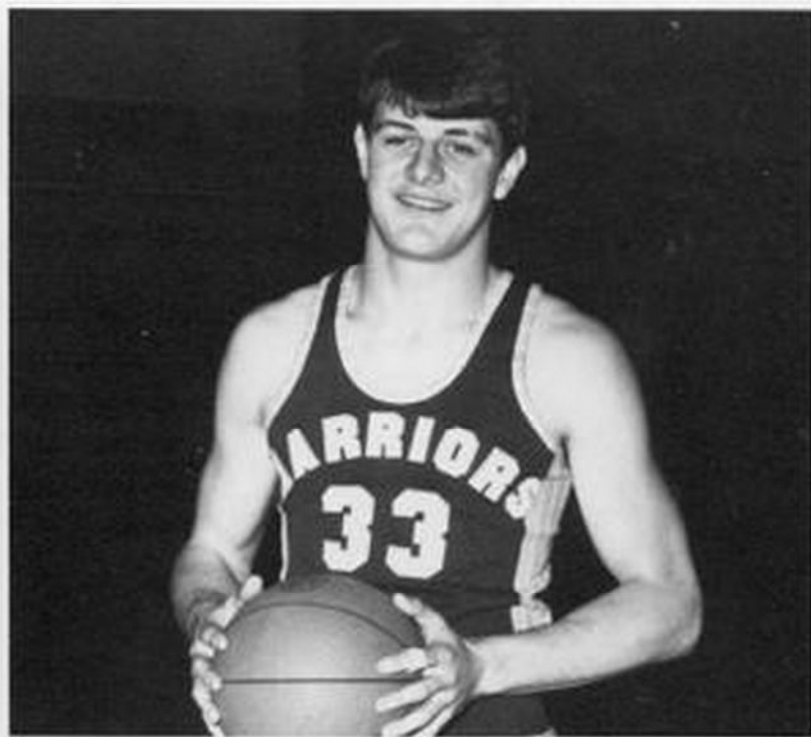
Jimmy Cutlip



D. C. Gum



David Jones



Jim Ryder



JV BASKETBALL

KNEELING- Mark Waslo, Larry Ryder, **2nd ROW-** Left to right, Coach Welder, John Boyer, Andrew Hiner, Phil Keathly, Mark Gum, Wesley Patton, Pat Schaffner, manager

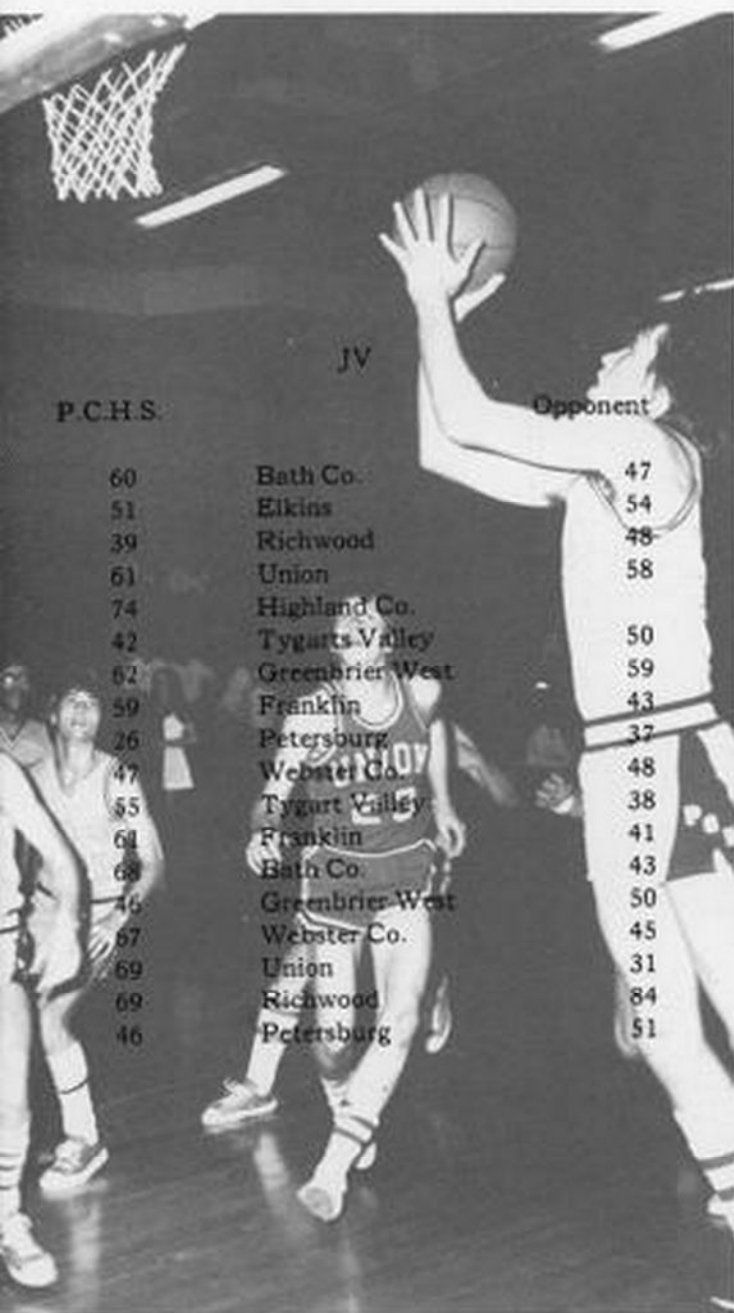
JV BASKETBALL

FRESHMAN BASKETBALL

KNEELING- Keith Pondexter, Wayne Cassell, Bobby Gibbs, manager, Coach Welder, Richard Oref, **STANDING-** Left to right, Glenn Arbogast, Jimmy Dolan, Jeff Barb, Phil Hill, Conrad Smith



JV BASKETBALL



JV

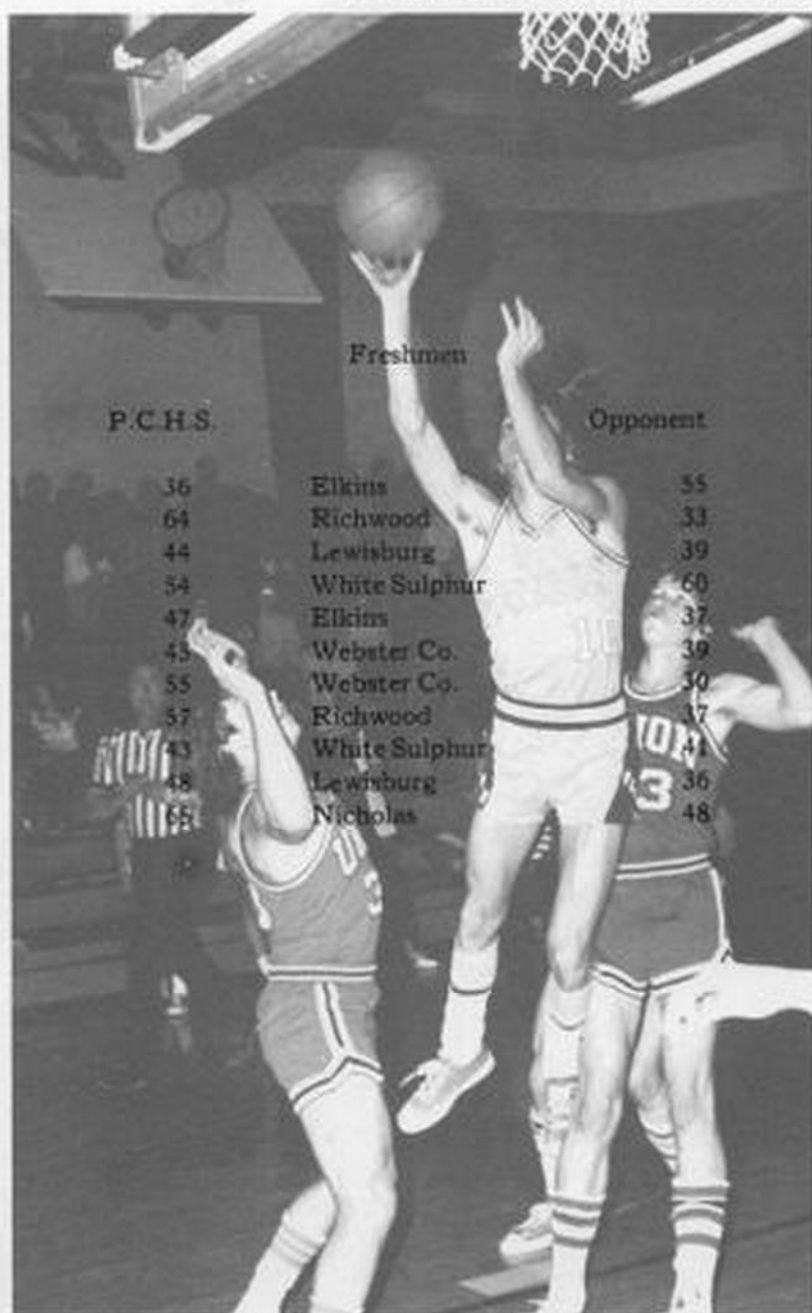
P.C.H.S.

Opponent

60	Bath Co.	47
51	Elkins	54
39	Richwood	48
61	Union	58
74	Highland Co.	
42	Tygarts Valley	50
62	Greenbrier West	59
59	Franklin	43
26	Petersburg	37
47	Webster Co.	48
55	Tygart Valley	38
61	Franklin	41
68	Bath Co.	43
46	Greenbrier West	50
67	Webster Co.	45
69	Union	31
69	Richwood	84
46	Petersburg	51

FRESHMAN

BASKETBALL



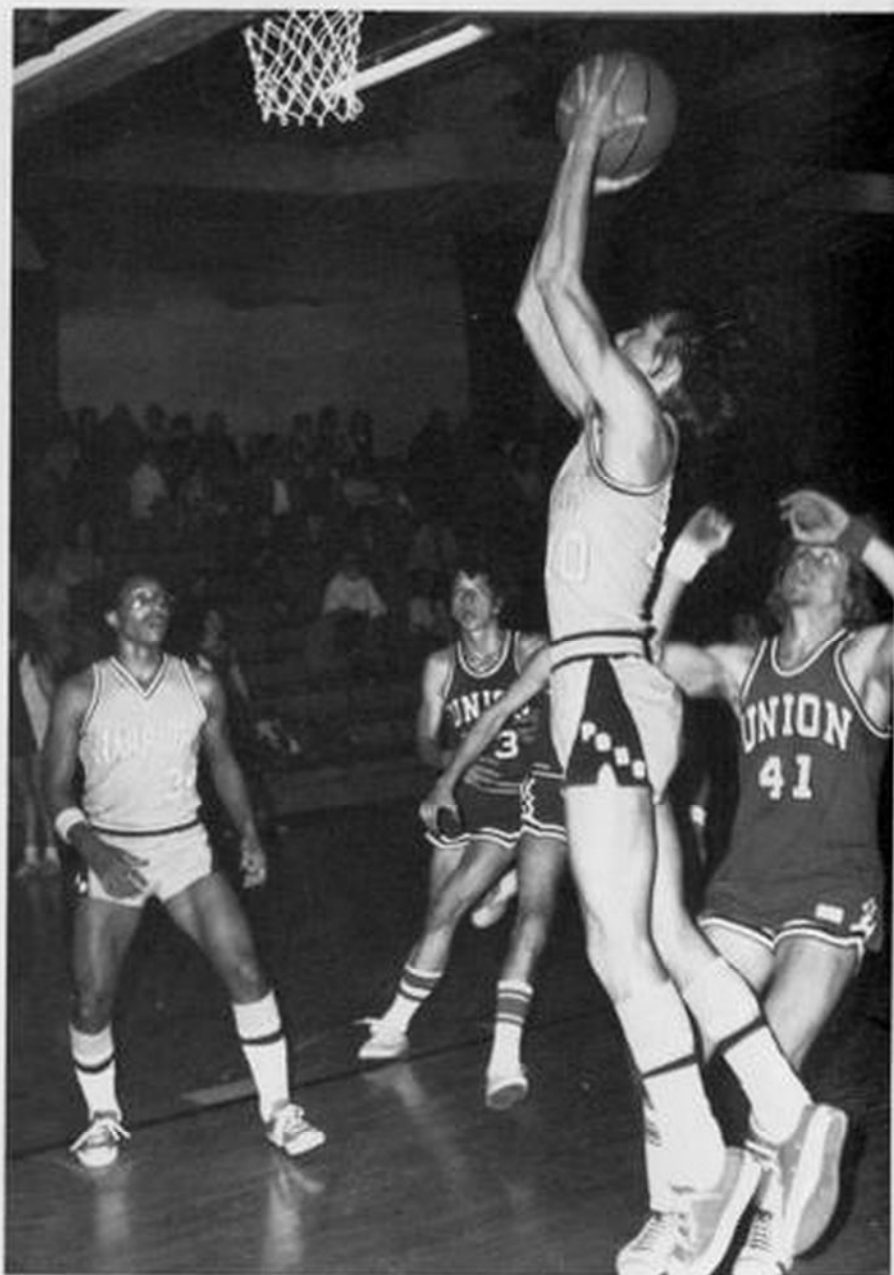
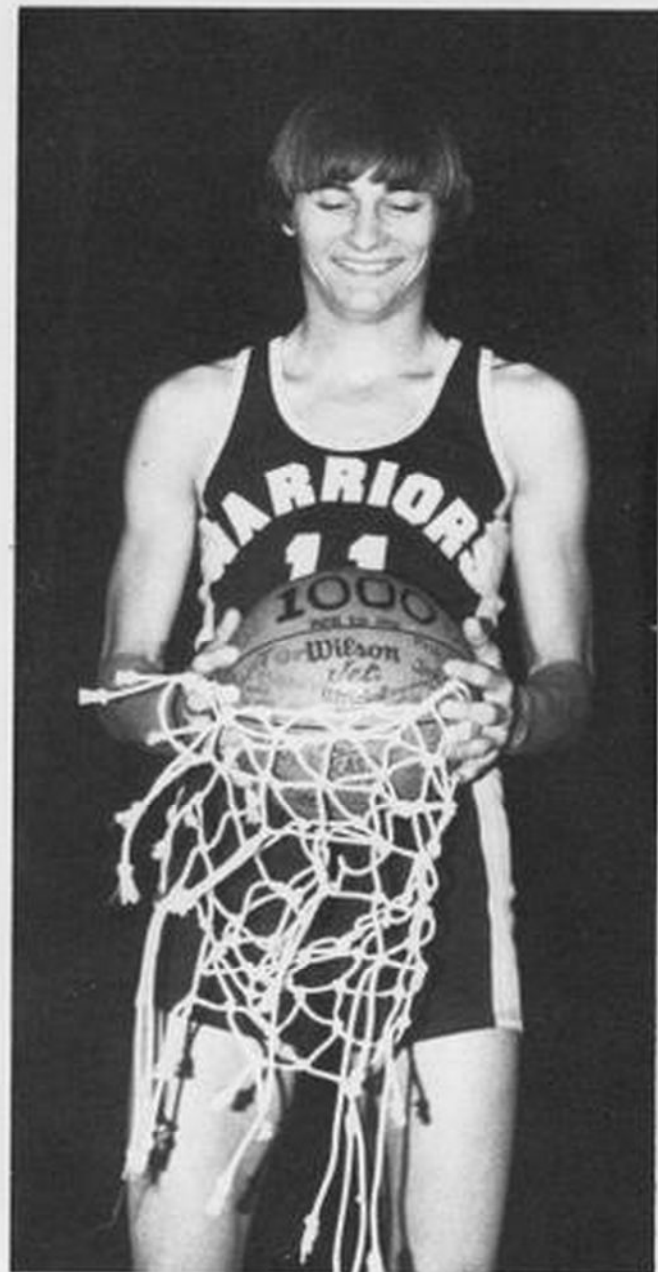
Freshmen

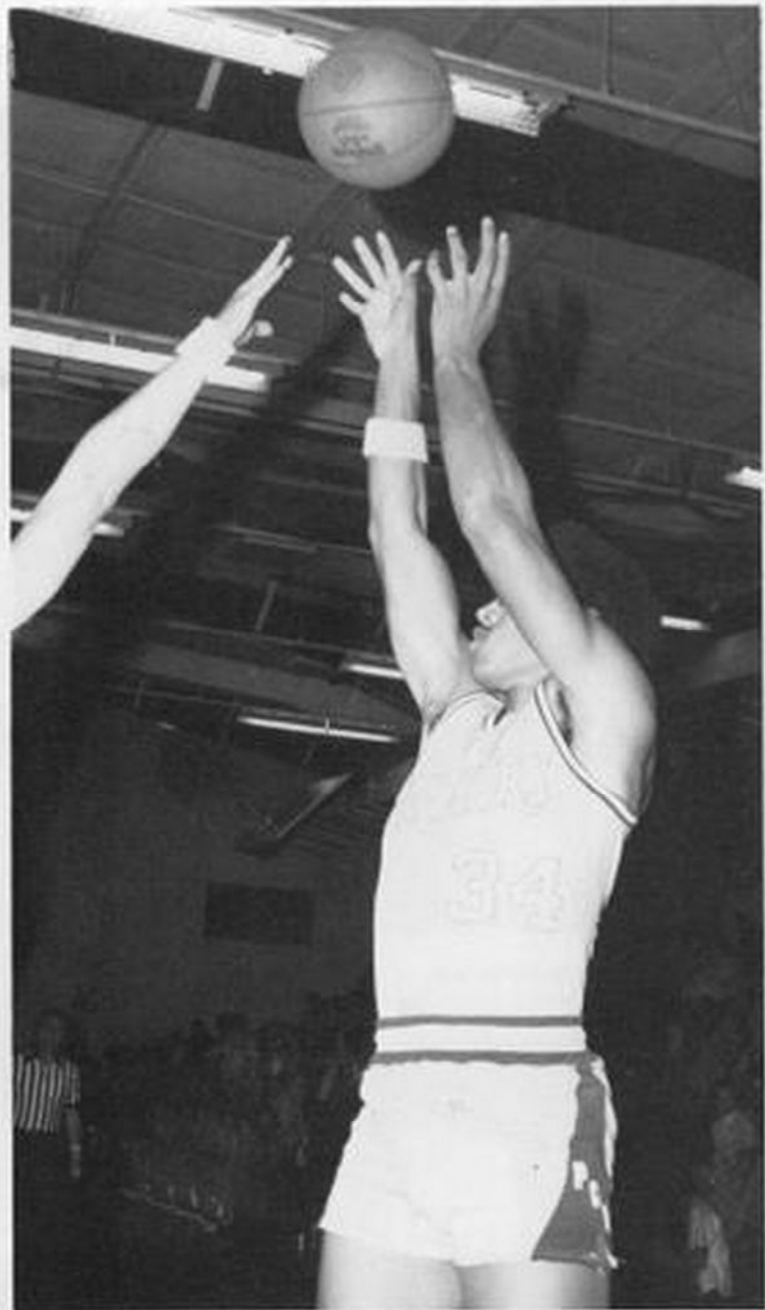
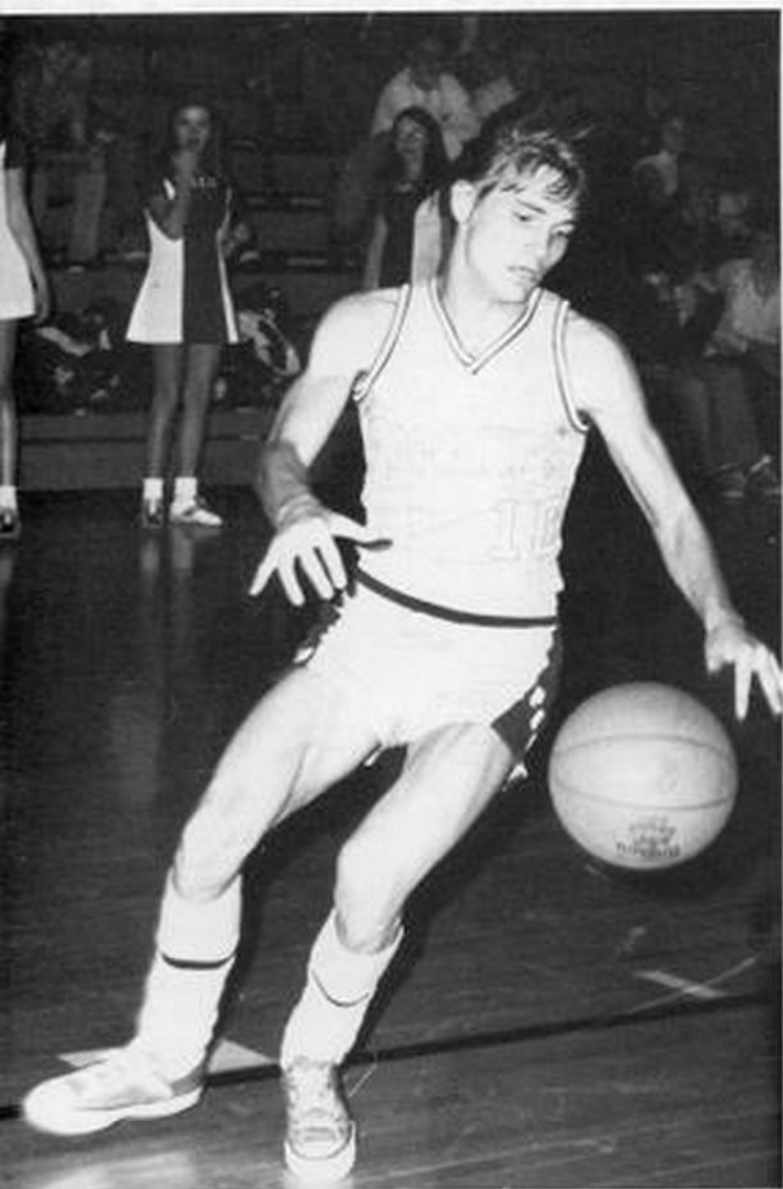
P.C.H.S.

Opponent

36	Elkins	55
64	Richwood	33
44	Lewisburg	39
54	White Sulphur	60
47	Elkins	37
43	Webster Co.	39
55	Webster Co.	30
57	Richwood	37
43	White Sulphur	41
48	Lewisburg	36
65	Nicholas	48







GIRLS' VARSITY BASKETBALL



1st ROW, Left to Right-Coach Bob Welder, Tammy Christ, Susie Kershner, Geraldine Mace, Maxine Rexrode, Kay Galford, Debbie Smith, Sally Lambert, 2nd ROW-Donna Chocklett.

Manager, Shirley Beverage, Ann Johnston, Kathy Burks, Cathy Patten, Vickie Shearer, Debbie Cutlip, Lottie Buzzard, Amy Vrable, Manager.

GIRLS' FRESHMAN BASKETBALL



KNEELING, Left to Right-Amy Vrable, Coach Bob Welder, Pam Dilley. STANDING-Connie Kershner, Jackie Sewell, Kim Doyle, Karen Valencia, Jane Cassell, Vickie Mullenex.

GIRLS' TRACK



FIRST ROW: L. to R.- Susan Kershner, Amy Vrabie, Pam Dilley, Maxine Rexrode, Debbie Lusk, Kay Galford, Debbie Smith, Mary Jane Oref. 2nd ROW: Kitty Galford, Terry Albee, Barbara Cutlip, Dorene Simmons, Jane Cassell, Marilyn Ander-

son, Jackie Sewell, Kim Doyle, Ann Johnston, Lola Slayton, Debbie Ralston, Debbie Galford, Lori Albee, Donna Chocklett, Karen Miller, Amy Taylor, Shirley Beverage, Kathy Burks, Tammy Crist, Teresa Rose



BOY'S TRACK TEAM



FIRST ROW: Chuck Brockway, Greg Brubaker, Eddie Beverage, Jaimie Abdella, Pete Chestnut, Larry Ryder, Jerry Pennington. **SECOND ROW:** Matt Fromhart, David Lee Cassell, Kenny Cassell, Bobby Myers, Mark Gum, William Dilley, Melvin Ricotelli, Thomas Barnisky, Andy Hiner. **THIRD ROW:** Assistant Coach Elmer Friel, Mark Waslow, Richard Faulknier, John Manly, Fred Tibbs, Ronnie Mullens,

Lewis Fromhart, Albert Pondexter, Arbie McLaughlin, Head Coach Arch Wooddell. **FOURTH ROW:** Jeff Shaw, Chris Mullens, D. C. Gum, Joe McMillion, Ricky Doyle, Ronnie Van Reenan, John Dilley, Tom Valencia. **FIFTH ROW:** Paul Kessler, Jimmy Cutlip, Steve McCoy, John Puffenbarger, Jim Ryder.



These boys participated in the state track meet. **KNEELING** are: Thomas Barnisky Manager, Keith Pondexter, Ricky Irvine, William Dilley. **STANDING** are: Tom Valencia, Jimmy Cutlip, Albert Pondexter and D. C. Gum.







VARSITY CHEERLEADERS



CENTER- Mary Jane Oref BOTTOM- L. to R.- Peggy Hovatter, Sue Lighter, Joyce Wilfong TOP- Paula Phillips Thomas, Teresa Sheets, Betty Ann Crist



JV CHEERLEADERS



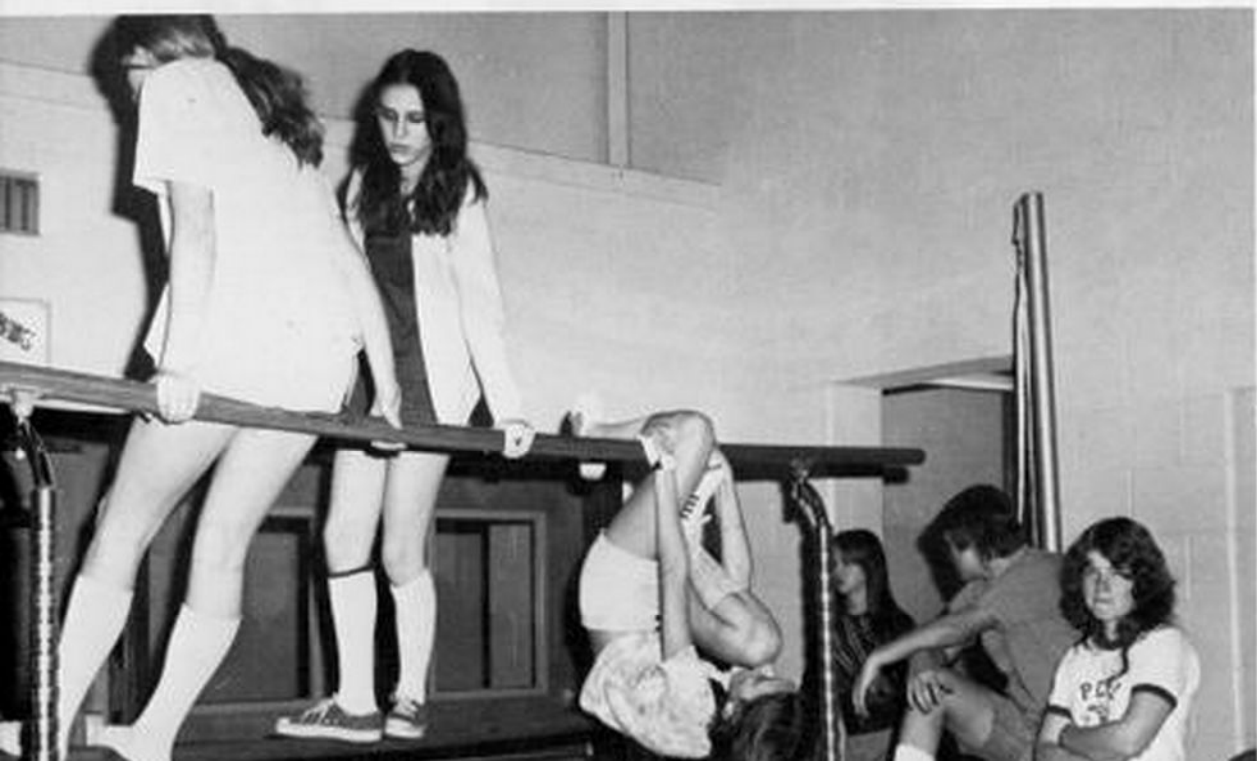
TOP CENTER- Pam White LOWER CENTER- Karen Galford LEFT- Cindy Galford RIGHT- Brenda Wyatt

FRESHMAN CHEERLEADERS

BOTTOM- L. to R.- Karen Valencia, Jane Cassell, Kim Doyle, Gloria Jackson TOP- Kathy Sharp, Vickie Mullenex









Organizations

FUTURE HOMEMAKERS OF AMERICA



FIRST ROW: Left to Right: Teresa Sheets, Debbie Ralston, Nancy Pugh, Brenda Wyatt, Kim Nottingham, Roberta Vance, Cindy Sewell, Anita Crist, Sherry Wyatt SECOND ROW: Mrs. Vance, Allison Vrabl, Cheryl Nottingham, Debbie Smith, Marvinna Doss, Felicia Sharp, Bertha Dickenson, Mrs. VanReenan, THIRD ROW: Linda Shue, Patricia Ryder, Lori Kane, Julie Barlow, Peggy McNeill, Teresa Taylor, Julia Gibson, Mona Vance, Karen Galford FOURTH ROW: Sally Lambert, Amy

Vrabl, Tammy Beale, Jane Pritchard, Ramona Mace, Kathy Bennett, Geraldine Mace, Brenda Murray, Debra Jordan FIFTH ROW: Rachel Taylor, Erma Grimes, Mary Ann Leach, Deloris Pritt, Cheryl Campbell, Becky Kiner, Carol Moore. SIXTH ROW: Betty Ann Crist, Peggy Hovatter, Polly Johnson, Vicki Shears, Jill Abdella, Jennie Kennison, Drema Dean. SEVENTH ROW: Jo Ann VanDevender, Teresa Townsend, Vicki Barkley, Naomi Taylor, Louise Fromhart, Debbie Cutlip.

FUTURE FARMERS OF AMERICA



Left to Right, FRONT ROW: Mr. Irvine, Mr. McMann, Sponsors, Charles Wilfong, Danny Beverage, Allan McNeel, Pat Schaffner, William Taylor, William Dilley, Lola Wiley, Connie Kershner. SECOND ROW: Jimmie Ryder, Jamie Gum, Teddy Hoover, Tommy Kelley, Albert Carpenter, Julian Montgomery, Ricky Irvine, Jeff Barb, Jeff Sharp, Sam Barlow, Doug Morrison, DeWitt Tompson. THIRD ROW: Greg Rose, Bruce Taylor, Mike Hogan, Timmy Galford, Julian Rittenhouse, Bill Galford, David Taylor, Henry Grimes, Willie Shank, Doug Scott, Steve Friel, George Thomas. FOURTH ROW: Eddie Beverage, John Bennett, Lloyd Reed, Keith Pondexter, Richard Oref, Scott Kelley, Jeff Jackson, Thomas

Barnisky, Dave McPatters, Burton Barlow, Kerwin Madison, Mark Fertig. FIFTH ROW: Kenney Cassell, Robert Myers, Phillip Hill, Bobby Powell, Conrad Smith, Glen Arbogast, Ronnie Sharp, Sally Lambert, Loretta Blankenship. SIXTH ROW: Grant Galford, Alfred Gum, Troy Sharp, Mike Kelley, James Jordon, Gary Cutlip, Paul Goldizen, Eddie Turner, Gary Williams, Darrell Shinaberry, Forest Wooddell. SEVENTH ROW: Mike Kinnison, Mike Fowler, Mark Dilley, Greg Cochran, John Barlow, Paul McNeill, Oliver Young, Larry Offut. EIGHTH ROW: Eugene Carpenter, Henry Scott, Ronnie Dean, David Friel, Mike Phillips, Lee Good, Rick Harper, Emery Grimes, Kenny Hall.

FUTURE TEACHERS



Left to Right. **FRONT ROW:** Bertha Dickinson, Lori Moore, Peggy McNeil, Teresa Taylor, Becky Kiner, Rachel Taylor, Erma Grimes, Katie Crickenberger. **SECOND ROW:** Felicia Sharp, Chris Mullens, Randall Lewis, John Dean, Steve Hefner, Bob Walls, Mr. Glen Wade, Mrs. Marty Wade, Sponsors.

MEDICAL EXPLORERS



Left to Right. **FRONT ROW:** Mrs. Gladys Vance, Sponsor, Kathy Richmond, Kitty Galford, Anna Gum, Janetta Williams. **SECOND ROW:** Debbie Grimes, Jewell Lusk, Geraldine Mace, Vicki Barkley, Peggy Chesnut, Mary Hill. **THIRD ROW:** Ramona Mace, Donna Dilley, Kathy Bennett, Cathy Patton, Linda Shue.

LETTERMAN'S CLUB



Left to Right, FRONT ROW: D. C. Gum, Ronnie Van Reenan, Jeff Shaw, Jerry Pennington, Paul Kesler. SECOND ROW: Mark Gum, Adam Bond, Joe McMillion, Steve McCoy, Chris Mullens. THIRD ROW: Greg Brubaker, William Dilley, Kenny Cassell, Johnny Puffenbarger, Arbie McLaughlin, Fred Tibbs, Forrest Mullenax. FOURTH ROW: Mr. Arch Wooddell, sponsor, Jimmy Ryder, Albert Pondexter, Jimmy Cutlip, Tom Valencia, Johnny Totten.

CONSERVATION CLUB



Left to Right, SITTING: David McMillion, Dale Long, Robert Nelson, Jimmy Ryder. STANDING: Becky Varner, Susan Kersher, Tammy Crist, Patty Brock, Jackie Sewell, Regina Jordan, Mary Evans, Carolyn Kellison, Greg Curry, Mrs. Lyla Howell, sponsor, Mike McLaughlin, Willie Shank, Roxanna Hofer.

PEP CLUB



Left to Right, **FRONT ROW:** Peggy Hovatter, Betty Ann Crist, Teresa Sheets, Mary Jane Oref, Paula Phillips Thomas, Sue Lightner, Joyce Wilfong. **SECOND ROW:** Marvinna Doss, Cindy Galford, Cathy Mitchell, Cheryl Galford, Doreen Simmons, Carol Galford, Marilyn Anderson, Mrs. Kathy McGee, sponsor, Pam Dunbrack, Tammy Workman. **THIRD ROW:** Cyndi Galford, Teresa Beale, Bertha Dickenson, Cindy Sewell, Julia Gibson, Allison Vrabie, Pam White, Kathy Wagner, Ginny McLaughlin, Debbie Little, Karen Galford, Margaret McKinney. **FOURTH ROW:** Debbie Ralston, Tammy Beale, Cheryl Campbell, Jane

Pritchard, Kim Nottingham, Cheryl Nottingham, Peggy McNeill, Julie Barlow, Teresa Taylor, Roxanna Hofer, Karen Kellison, Donna Rudd. **FIFTH ROW:** Penny Beck, Felicia Sharp, Amy Vrabie, Jackie Sewell, Brenda Wyatt, Susie McCarty, Mary Evans, Susan Kershner, Regina Jordan, Cheryl Kestley, Judy Lane. **SIXTH ROW:** Sally Lambert, Loretta Blankenship, Pam Dilley, Anna Gum, Mary Hill, Karen Scott, Carolyn Kellison, Jan Millican, Anita Crist, Naomi Taylor, Janetta Williams, James Johnson, John Manley.

POCHAHONTAS COUNTY HIGH SCHOOL HISTORICAL SOCIETY



Left to Right. FRONT ROW: Kim Nottingham, Becky Sharp, Jane Pritchard, Terry Albee, Cathy Patton, Pam White, Peggy McNeil, Julie Barlow, Carmen Jobson, Julia Gibson, Sue

Lightner, Mona Vance. SECOND ROW: Mr. Stewart, Sponsor, Lowell Underwood, Ronnie VanReenan, Bobby Powell, Randy Stemple, Bill Pennington, Rocky Lannan, Lewis Fromhart.

FUTURE BUSINESS LEADERS OF AMERICA



Left to Right, FRONT ROW: Mrs. Linda Stewart, Sponsor, Rachel Taylor, Paula Thomas, Brenda Wyatt, Mona Vance, Susan Kershner, Christine Cook, Miss Dean, Sponsor, SE-

COND ROW: Anita Crist, Jan Millican, Brenda Hamrick, Ellen Cauley, Karen Galford, Virginia Cloonan, Geraldine Mace, Debbie Cutlip, Debbie Jordan.

C.B. CLUB



Left to Right. **FRONT ROW:** Peggy McNeil, Bobby Gibb, Loretta Blankenship, Holly Hise, Mr. Glenn Wade, Sponsor. **SE-
COND ROW:** Mike Williams, Ronald Wiemer, Craig Doss, Barbara Rexrode, Polly Johnston, Sally Lambert, Paul Kesler.

PALS



Left to Right. **FRONT ROW:** Mona Vance, Ellanor Sparks, Sherry
Ryder, Debbie Jordan, Sherry Moore, Carla Mullnax, Rose Varner,
JoAnn VanDevender, Mary Taylor, Mrs. Virginia Shafer, Sponsor.

SECOND ROW: Miss Dean, Sponsor, Julia Gibson, Brenda Wyatt,
Susie McCarty, Debbie Little, Regina Jordan, Christine Cook,
Brenda Hamrick, Annette Shifflett, Terry VanReenan.

TEACHER'S AIDS



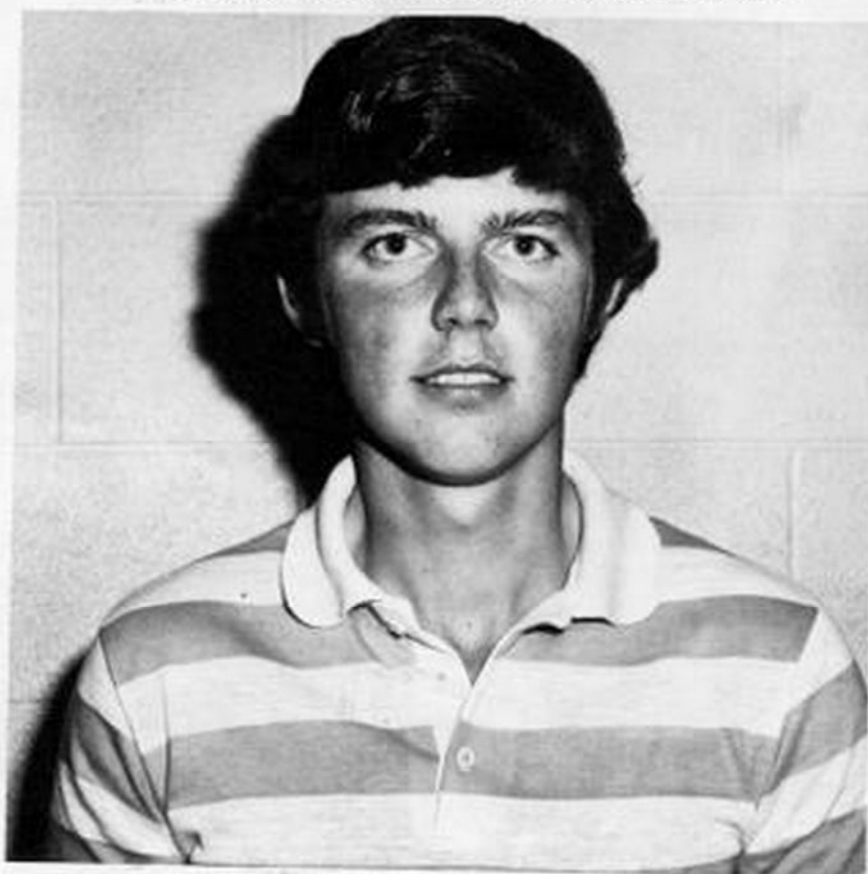
Left to Right. FRONT ROW: Carla Mullenax, Jerry McLaughlin, Robert McClure, Debbie Scott, Karen Miller, Mary Taylor, Kathy Richmond, Julia Kincaid, Rachael Taylor, John Evans. SECOND ROW: Tammy Crist, Patty Brock, Joyce Corbett, Carolyn Beverage, Teresa Beale, Terry VanReenan, Barbara Beverage, Debbie Gromes, Jan Rosen-
crance, Cathy Martin, John Walker, Peggy Hovatter, Elanor

Sparks. THIRD ROW: Tammy Workman, Charles Wilfong, Susie McCarty, Julia Gibson, Mona Vance, Brad Thomas, Paula Thomas, Jan Millican, Mark Waslo. FOURTH ROW: Robin Francisco, Judy Lane, Mike Totten, Chris Mullens, Mike McLaughlin, Jona Nuckoles, Erma Grimes, Diana Simmons, Leona Sharp. FIFTH ROW: Mike Albee, David Jonese, Dale Long, Alfred Gum, Steve Hefner, Price Barlow, Sue Lightner.

CONSERVATION SPEECH WINNERS



Left to Right: Cindy Galford, Bill Pennington, Kitty Galford.



STATE STAR FARMER

Charles Wilfong

BAND



Left to Right. **FRONT ROW:** Cindy Sewell, Jill Abdella, Teresa Beale, Allison Vrabie, Janetta Williams, Cindy Galford, Karen Kellison, Delores Pritt, Kim Nottingham, Cheryl Danbrack. **SECOND ROW:** Mr. Faulber, Marvina Doss, Vicki Bennett, Kay Galford, Vicki Mullenax, Anita Tracy, Mike Williams, Allen McNeel, Barbara Beverage, Timmy Cassel. **THIRD ROW:** Teresa Sheets, Debbie Lusk, Doreen Simmons, Naomi Taylor, Carol Galford, Cindy Galford, Marilyn Anderson, Peggy Hovatter, Ves Burford, Amy Vrabie, Arbie McLaughlin, Betty Ann Crist, Kerwin Madison, Pam White, D. C. Gum, Gary Taylor. **FOURTH ROW:** Ginny McLaughlin, Kris Kuhlken, Debbie Smith, Randy Stemple,

Cheryl Campbell, Serena Vandevender, Cheryl Nottingham, Mike Kennison, Terry Albee, Jeannie Triplett, Cathy Mitchell, Jeanne Kellison, Wilbur Smith. **FIFTH ROW:** Roberta Vance, Debbie Ralston, Anna McKinley, Tammy Beale, Teresa Taylor, Julie Barlow, Vicki Gragg, Nina Perry, Sandy McMillion, Willey Shank, Cathy Biggs, Leta Sharp, Bobby Gibb, Carol Smith, David McMillion. **SIXTH ROW:** Penny Beck, Mary Ann Leach, Lori Albee, Jane Pritchard, Kathy Sharp, Jan Rosencrance, Joyce Wilfong, Bill Pennington, Cheryl Galford, Kitty Galford, Teresa Rose, Lori Moore, Craig Doss.

PERCUSSION

Left to Right, **FRONT ROW:** Kitty Galford, Jeanie Triplett, Mike Kinnison, Bobby Gibb, Willy Shank. **SECOND ROW:** David McMillion, Serena Vandevender, Randy Stemple, Ginny McLaughlin, Kris Kuhlken.



WOODWIND



Left to Right, **FRONT ROW:** Debbie Smith, Delores Pritt, Cheryl Campbell, Cheryl Nottingham, Teri Albee, Cathy Mitchell, Jeanne Kellison, Sylvester Burford, Cyndi Galford, Joyce Willong. **SECOND ROW:** Teresa Beale, Karen Kellison, Carol Galford, Marilyn Anderson, Jill Abdella, Cindy Sewell, Kerwin Madison, Allen McNeel, Arbie McLaughlin. **THIRD ROW:** Janetta Williams, Timmy Cassell, Peggy McNeill, Julia Barlow, Roberta Vance, Lori Albee, Jane Pritchard, Debbie Ralston, Leta Sharp. **FOURTH ROW:** Lori Moore, Teresa Rose, Cheryl Galford, Teresa Taylor, Cathy Biggs, Anna McKinney, Nina Perry, Carol Smith, Mary Ann Leach. **SIXTH ROW:** Cheryl Dunbrack, Tammy Beale, Jackie Sewell, Penny Beck, Kathy Sharp, Louise Fromhart, Vicki Gragg, Sandy McMillion, Jan Rosencrance.

BRASS



Left to Right. **FRONT ROW:** Teresa Sheets, Marvinna Doss, Vicki Bennett, Kay Galford, Vicki Mullenax, Anita Tracy, Mike Williams, Barbara Beverage. **SECOND ROW:** Doreen Simmons, Debbie Lusk, Naomi Taylor, Cindy Galford, Peggy Hovatter, Amy Vrable, Betty Ann Crist, Kim Nottingham. **THIRD ROW:** Bill Pennington, Craig Doss, Wilbert Smith, Pam White, Gary Taylor, Allison Vrable.

MAJORETTES



Cindy Sewell, Jill Abdella, Teresa Beale, Allison Vrable, Janetta Williams, Cyndi Galford, Karen Kellison, Delores Pritt, Kim Nottingham, Cheryl Dunbrack.

MAJORETTES



CINDY SEWELL



JILL ABDELLA



TERESA BEALE



ALLISON VRABLE



JANETTA WILLIAMS



CYNDI GALFORD



KAREN KELLISON



DELORIS PRITT



KIM NOTTINGHAM



CHERYL DUNBRACK
HEAD

MAJORETTES



Left to Right, FRONT ROW: Cindy Sewell, Jill Abdella, Teresa Beale, Allison Vrable, Janetta Williams, Cynli Galford, Karen Kellison, Deloris Pritt, Kim Nottingham, Cheryl Dunbrack.

ALTERNATE MAJORETTES



Left to Right, FRONT ROW: Teresa Rose, Jeanne Kellison, Barbara Beverage.

STUDENT COUNCIL



Left to Right. FRONT ROW: Anita Crist, Tammy Beale, Teresa Beale, Mike Hogan, Mary Jane Oref, Charles Wilfong, Peggy

Hovatter, Teresa Sheets, Cheryl Galford, Allison Vrable, Cathy Mitchell, Mr. Stewart, sponsor.

WHO'S WHO



Left to Right. **FRONT ROW:** Sally Lambert, Kitty Galford, Susan Kershner, Debbie Grimes, Karen Scott, Steve Hefner, Erma Grimes, Annette Shifflett, Larry Offutt.

FUTURE NURSES



Left to Right. **FRONT ROW:** Kathy Richmond, Vicki Barkley, Debbie Bennett, Georgia McNeil. **SECOND ROW:** Mrs. Gladys Vance, sponsor, Kitty Galford, Janetta Williams, Anna Gum, Priscilla Tincher, Carolyn McLaughlin, Carmen Johnson.

ENGLISH EXCHANGE



Left to Right, FRONT ROW: Sharron Flint, Katharina Letchford, Sarah Crach, SECOND ROW: Mr. Carrington, Keith Knapp, Susan Webb, Christie Velon, Gale Arnold.

HONOR SOCIETY OLD MEMBERS



Left to Right. FRONT ROW: Mary Jane Oref, Anita Crist, Cathy Martin, Jannetta Williams. SECOND ROW: Kris Kuhlken, Greg Curry, D. C. Gum, Randall Nottingham, Charles Wilfong, Larry Offutt.

POP'S GROUP



Left to Right. **FRONT ROW:** Kay Galford, Kitty Galford, Barbara Beverage, Debbie Smith, Kim Nottingham, Marvinna Doss, Jane Pritchard, Peggy Hovatter, Teresa Sheets, Jan Rosencrance, Peggy McNeill, Vicki Mullenax, Mr. Fauber, Sponsor. **SECOND**

ROW: Arbie McLaughlin, Kris Kulkhen, Kenny Cutlip, Wilbur Smith, Steve Hefner, Randy McPaters, Craig Doss, D. C. Gurn, Ronnie VanReenan, Timmy Cassell, Allen McNeel, Bill Pennington, Mike Williams.

OFFICE STAFF



Left to Right. **FRONT ROW:** Carol Ryder, Donna Rudd, Carol Moore, Sugar Cain, Mary Jane Oref, Anita Crist, Virginia Clooan, Karen Scott, Sue Lightner, Steve Hefner.

YEARBOOK STAFF



Left to Right. **FRONT ROW:** Becky Kiner, Jeannen Turley, Jerry McLaughlin, Vicki Kerr, Joyce Corbett. **SECOND ROW:** Brenda Hamrick, Sandy Woodell, Randall Lewis, John Dean.

THIRD ROW: Sean Hite, Melinda Dean, Sherry Taylor, Diane Simmons.

OFFICE STAFF



Left to Right, FRONT ROW: Bonnie Auldridge, Ellen Gum, Robin Matheny, Debbie Moyers, Roxanna Hofer, Debbie Bennett, Teresa Carpenter. SECOND ROW: Sue Lightner, Stephanie Phillips, Pam Dilley. THIRD ROW: Ronnie VanReenan, Steve Hefner, Mrs. Molly Diller, sponsor, Robert McClure, Mona Vance, Mike Hogan.